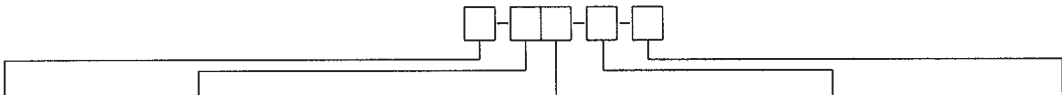


Stainless Steel Valves

TABLE OF CONTENTS

Gate Valve, Class 150, Model #10	1
Gate Valve, Class 300, Model #10	2
Gate Valve, Class 600, Model #10	3
Swing Check Valve - Thrd (Model #230, 330, 430) and SW (Model #234, 334, 434)	4
Swing Check Valve, Class 150, Model #30	5
Swing Check Valve, Class 300, Model #30	6
Swing Check Valve, Class 600, Model #30	6
Swing Check Valve, Class 900, Model #30	7
Swing Check Valve, Class 1500, Model #30	7
Swing Check Valve, Class 2500, Model #30	7
Tilt Disc Check Valve, Class 150, Model #31	8
Globe Valve, Class 150, Model #20	9
Globe Valve, Class 300, Model #20	10
Globe Valve, Class 600, Model #20	10



SIZE	MODEL	SHELL MATERIAL			PRESSURE RATING	OPTIONS
		Suffix	ASTM Grade	Category		
½"	10 - Gate	A	CN7M	- Alloy 20	150	Special Packing & Gaskets
¾"	20 - Globe	F	CF8M	- 316	300	
1"	30 - Swing Check				600	Butt Weld
1¼"	31 - Tilt Disc Check	C	CF8	- 304	900	
1½"		CL	CF3	- 304L	1500	Gear Operators
2"		CN	CF8-C	- 347	2500	
2½"	Threaded & Socket Weld Swing Checks	CT	CF8-T	- 321		
3"		D	CD4MCu	- Duplex-SS		
4"	230 - 150# Thrd	FL	CF3M	- 316L		
5"	234 - 150# SW	G	CG8M	- 317		
6"	330 - 300# Thrd	GL	CG3M	- 317L		
8"	334 - 300# SW	HB	N12MV	- Hastelloy B		
10"	630 - 600# Thrd	HC	CW12MW	- Hastelloy C		
12"	634 - 600# SW	IN	CY40	- Inconel		
14"		M1	M35-1	- Monel		
16"		M2	M35-2	- Monel		
18"		M3	M35-H	- Monel		
20"		N	CZ100	- Nickel		
24"		SM	CK3M CuN	- 254SMO Special		



Stainless Steel Gate Valve

Model #10

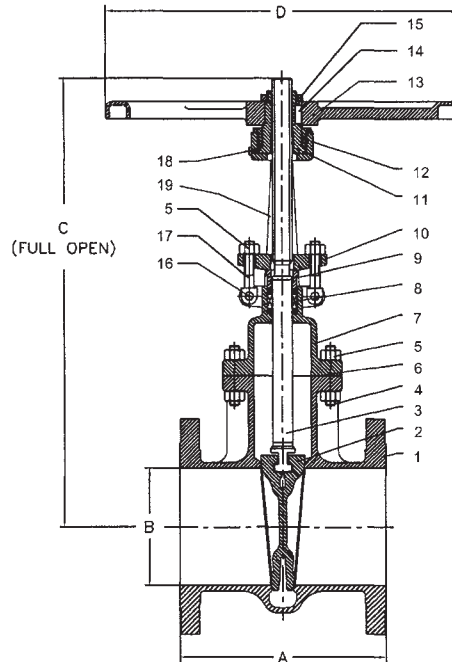
Class 150 (1" to 24")

- Full port**
- Precision machined flexible wedge gate and seat for tight shutoff**
- Heavy duty cast construction**
- Body-guided wedge insures alignment, low closing torques and reduced noise and vibration**
- Integral backseat**
- Outside screw and yoke, non-rising handwheel, rising stem**
- Locking handwheel nut**
- Rugged carbon steel handwheel**
- Available in a wide range of alloys**



**Designed to ANSI B16.34,
API 603, tested to API 598.
Face to face ANSI B16.10,
Flanges to ANSI B16.5**

NO.	PART NAME	A 351-CF8M	A 351-CN7M
1	BODY	A 351-CF8M	A 351-CN7M
2	WEDGE	A 351-CF8M	A 351-CN7M
3	STEM	A 276-316	A 351-CN7M
4	STUD	A 193-B8	A 193-B8M
5	HEX NUT	A 194-8	A 194-8M
6	GASKET	PTFE	PTFE
7	BONNET	A 351-CF8M	A 351-CN7M
8	GLAND PACKING	BRAIDED PTFE	BRAIDED PTFE
9	GLAND BUSH	A 276-316	A 351-CN7M
10	GLAND FLANGE	A 276-316	A 351-CN7M
11	STEM NUT	AL BRONZE (B 148-Gr D)	AL BRONZE (B 148-Gr D)
12	BONNET BUSH	A276-304/A 351-CF8	A276-304/A 351-CF8
13	HAND WHEEL	A 216-WCB/DUCTILE IRON	A 216-WCB/DUCTILE IRON
14	PARALLEL KEY	C 40	C 40
15	HAND WHEEL NUT	C 45 (BLACKODISED)	C 45 (BLACKODISED)
16	GROOVED PIN	A 276-316	A 276-316
17	GLAND BOLT	A 182-F304	A 182-F304
18	GREASE NIPPLE	A 276-304	A 276-304
19	YOKE	A 351-CF8M *	A 351-CN7M *



* YOKE FOR 14" AND UP IS CFB

SIZE	INCH	1	1½	2	2½	3	4	5	6	8	10	12	14	16	18	20	24
		MM	25	40	50	65	80	100	125	150	200	250	300	350	400	450	500
A	INCH	5	6.5	7	7.5	8	9	10	10.5	11.5	13	14	15	16	17	18	20
	MM	127	165.1	177.8	190.5	203.2	228.6	254	266.7	292.1	330.2	355.6	381	406.4	431.8	457.2	508
A (BWE)	INCH	5	6.5	8.5	9.5	11.12	12	15	15.88	16.5	18	19.75	22.5	24	26	28	32
	MM	127	165.1	215.9	241.3	282.4	304.8	381	403.3	419.1	457.2	501.6	571.5	609.6	660.4	711.2	812.8
B	INCH	1	1.5	2	2.5	3	4	5	6	8	10	12	13.25	15.25	17.25	19.25	23.25
	MM	25	38	51	64	76	102	127	152	203	254	305	337	387	438	489	591
C	INCH	9.7	12.8	14	17	19.1	23.5	27	29.4	38.5	45.3	53	61	69.3	76.9	87.2	101.5
	MM	243	326	357	432	485	596	686	746	978	1151	1341	1558	1761	1954	2215	2579
D	INCH	5	8	8	10	10	14	18	18	20	20	25	25	35.4	35.4	35.4	35.4
	MM	127	203	203	254	254	356	457	457	508	508	635	635	900	900	900	900
Weight	LBS	7	20	31	42	52	81	106	141	224	322	458	657	825	1466	1940	2194
	KGS	3	9	14	19	24	37	48	64	102	146	208	298	374	665	880	995

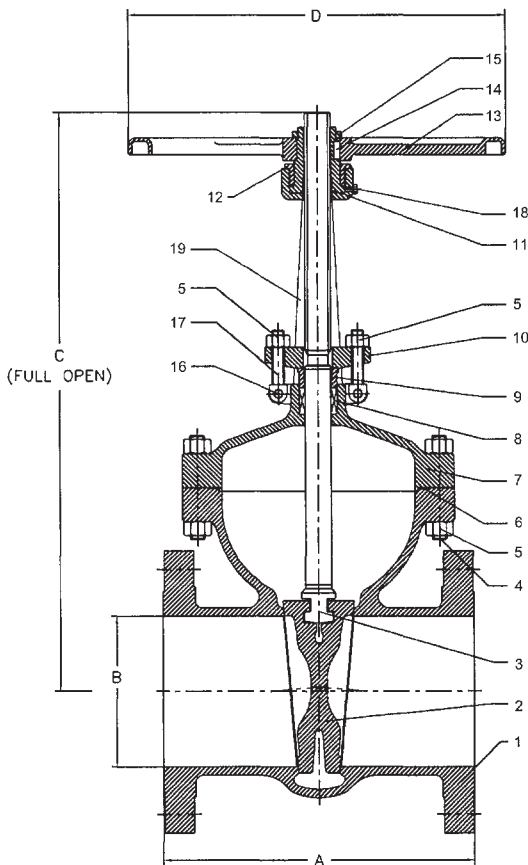


Stainless Steel Gate Valve

Designed to ANSI B16.34,
API 603, tested to API 598.
Face to face ANSI B16.10,
Flanges to ANSI B16.5

Model #10

Class 300 (2" to 14")



- Full port**
- Precision machined flexible wedge gate and seat for tight shutoff**
- Heavy duty cast construction**
- Body-guided wedge insures alignment, low closing torques and reduced noise and vibration**
- Integral backseat**
- Outside screw and yoke, non-rising handwheel, rising stem**
- Locking handwheel nut**
- Rugged carbon steel handwheel**
- Available in a wide range of alloys**

NO.	PART NAME	CF8M	A 351-CN7M
1	BODY	CF8M	A 351-CN7M
2	WEDGE	CF8M	A 351-CN7M
3	STEM	316	A 351-CN7M
4	STUD	A 193-B8	A 193-B8M
5	HEX NUT	A 194-8	A 194-8M
6	GASKET	PTFE	PTFE
7	BONNET	CF8M	A 351-CN7M
8	GLAND PACKING	BRAIDED PTFE	BRAIDED PTFE
9	GLAND BUSH	316	A 351-CN7M
10	GLAND FLANGE	316	A 351-CN7M
11	STEM NUT	AL BRZ (B 148-Gr D)	AL BRZ (B 148-Gr D)
12	BONNET BUSH	A276-304/A 351-CF8	A276-304/A 351-CF8
13	HAND WHEEL	A 216-WCB/DUCTILE IRON	A 216-WCB/DUCTILE IRON
14	PARALLEL KEY	C 40	C 40
15	HAND WHEEL NUT	C 45 (BLACKODISED)	C 45 (BLACKODISED)
16	GROOVED PIN	A 276-316	A 276-316
17	GLAND BOLT	A 182-F304	A 182-F304
18	GREASE NIPPLE	A 276-304	A 276-304
19	YOKE	A 351-CF8M *	A 351-CN7M *

* YOKE FOR 14" AND UP IS CF8

SIZE	INCH	2	2½	3	4	6	8	10	12	14
	MM	50	65	80	100	150	200	250	300	350
A *	INCH	8.5	9.5	11.12	12	15.88	16.5	18	19.75	30
	MM	215.9	241.3	282.4	304.8	403.4	419.1	457.2	501.7	762.0
B	INCH	2	2.5	3	4	6	8	10	12	13.25
	MM	51	64	76	102	152	203	254	305	337
C	INCH	14	17	19.5	23.7	31.5	39.6	47	58	63
	MM	357	432	495	603	800	1005	1194	1473	1600
D	INCH	10	14	14	18	20	20	25	25	36
	MM	254	358	358	457	508	508	635	635	900
Weight	LBS	40	-	89	148	268	418	672	946	1342
	KGS	18	-	40	67	122	190	305	429	609

* BWE dimensions are the same as flanged

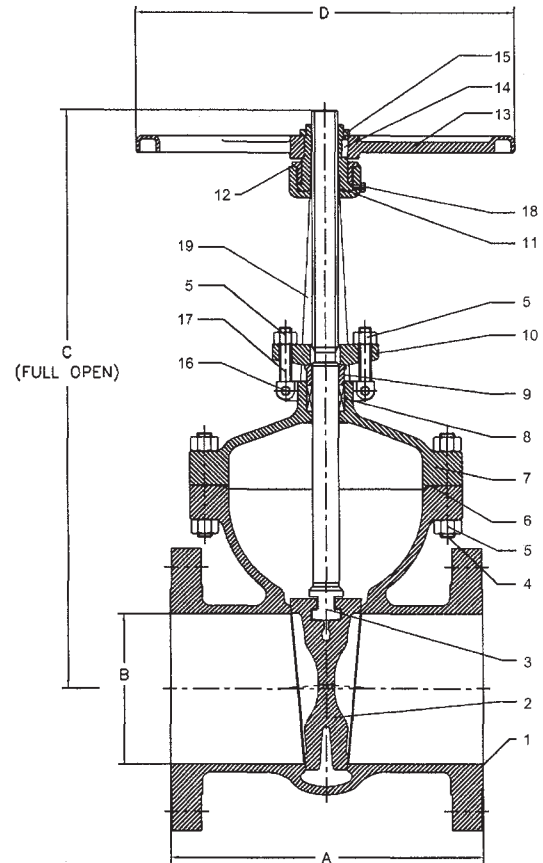


Stainless Steel Gate Valve

Model #10
Class 600 (2" to 12")

Designed to ANSI B16.34,
 API 603, tested to API 598.
 Face to face ANSI B16.10,
 Flanges to ANSI B16.5

- Full port**
- Precision machined flexible wedge gate and seat for tight shutoff**
- Heavy duty cast construction**
- Body-guided wedge insures alignment, low closing torques and reduced noise and vibration**
- Integral backseat**
- Outside screw and yoke, non-rising handwheel, rising stem**
- Locking handwheel nut**
- Rugged carbon steel handwheel**
- Available in a wide range of alloys**



NO.	PART NAME	CF8M	A 351-CN7M
1	BODY	CF8M	A 351-CN7M
2	WEDGE	CF8M	A 351-CN7M
3	STEM	316	A 351-CN7M
4	STUD	A 193-B8	A 193-B8M
5	HEX NUT	A 194-8	A 194-8M
6	GASKET	PTFE	PTFE
7	BONNET	CF8M	A 351-CN7M
8	GLAND PACKING	BRAIDED PTFE	BRAIDED PTFE
9	GLAND BUSH	316	A 351-CN7M
10	GLAND FLANGE	316	A 351-CN7M
11	STEM NUT	AL BRZ (B 148-Gr D)	AL BRZ (B 148-Gr D)
12	BONNET BUSH	A276-304/A 351-CF8	A276-304/A 351-CF8
13	HAND WHEEL	A 216-WCB/DUCTILE IRON	A 216-WCB/DUCTILE IRON
14	PARALLEL KEY	C 40	C 40
15	HAND WHEEL NUT	C 45 (BLACKODISED)	C 45 (BLACKODISED)
16	GROOVED PIN	A 276-316	A 276-316
17	GLAND BOLT	A 182-F304	A 182-F304
18	GREASE NIPPLE	A 276-304	A 276-304
19	YOKE	A 351-CF8M	A 351-CN7M

SIZE	INCH	2	2½	3	4	6	8	10	12	
	MM		50	65	80	100	150	200	250	300
A *	INCH		11.5	13.0	14.0	17.0	22.0	26.0	31.0	33.0
	MM		292.1	330.2	355.6	431.8	558.8	660.4	787.4	838.2
B	INCH		2	2.5	3	4	6	7.87	9.75	11.75
	MM		51	64	76	102	152	200	248	299
C	INCH		14.96	18.0	20.7	26.5	34.0	41.1	47.2	61.9
	MM		380.0	457.0	515.0	673	865	1045	1200	1573
D	INCH		10	14	14	18	20	20	25	25
	MM		254	358	358	457	508	508	635	635
Weight	LBS		87	120	127	257	492	798	1408	1975
	KGS		40	55	58	117	223	362	639	896

* BWE dimensions are the same as flanged



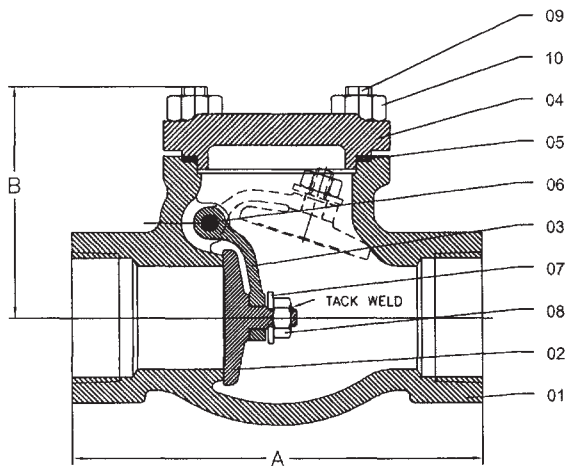


Stainless Steel Swing Check

Model #230/234, 330/334, 430/434

Class 150-300 (1/2" to 2")

Class 600 (1/2" to 1")



- Threaded and socket weld**
- Unique full port**
- Heavy duty cast construction**
- Bolted cover**
- Precision machined self-aligning disc ensures perfect seating of disc against body seat**
- Available in a wide range of alloys**

NO.	PART NAME	CF3M	A 351-CN7M
1	BODY	A 351-CF3M	A 351-CN7M
2	DISC	A 351-CF3M	A 351-CN7M
3	DISC CARRIER	A 351-CF3M	A 351-CN7M
4	COVER	A 351-CF3M	A 351-CN7M
5	GASKET	PTFE	PTFE
6	PIN (INTEGRAL)	A 276-316L	A 351-CN7M
7	WASHER	A 276-316L	A 351-CN7M
8	HEX NUT	A 276-316L	A 351-CN7M
9	STUD	A 193-B8	A 193-B8M
10	HEX NUT	A 194-8	A 194-8M

**Designed to ANSI B16.34,
tested to API 598, ends
to ANSI B16.11**

CLASS 150							
SIZE	INCH	1/2	3/4	1	1 1/4	1 1/2	2
	MM	15	20	25	31.75	40	50
A	INCH	3.75	3.75	5.0	5.5	6.0	6.5
	MM	95	95	127	139.7	152	165
B	INCH	3.15	3.15	3.15	3.43	3.43	3.78
	MM	80	80	80	87	87	96
CLASS 300							
SIZE	INCH	1/2	3/4	1	1 1/4	1 1/2	2
	MM	15	20	25	31.75	40	50
A	INCH	3.75	3.75	5.0	5.5	6.0	6.5
	MM	95	95	127	139.7	152	165
B	INCH	3.15	3.15	3.15	3.43	3.43	3.78
	MM	80	80	80	87	87	96
CLASS 600							
SIZE	INCH	1/2	3/4	1			
	MM	15	20	25			
A	INCH	3.75	3.75	5.0			
	MM	95	95	127			
B	INCH	3.15	3.15	3.15			
	MM	80	80	80			



Stainless Steel Swing Check

Model #30-150

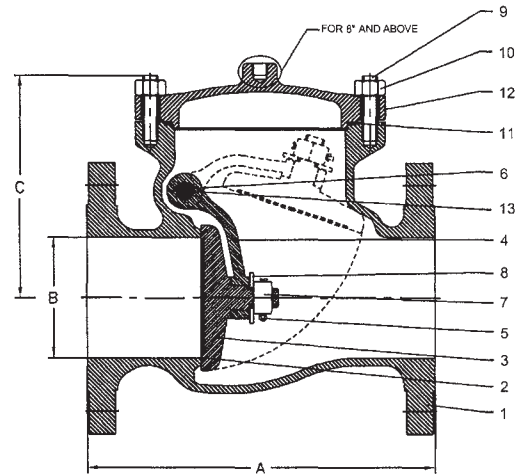
Class 150 (1/2" to 12")

- Unique full port
- Heavy duty cast construction
- Bolted cover
- Precision machined self-aligning disc ensures perfect seating of disc against body seat
- Available in a wide range of alloys



**Designed and tested to
ANSI B16.34, API 598,
API 6D face to face ANSI B16.10
Flanges to ANSI B16.5**

NO.	PART NAME	A 351-CF8M	A 351-CN7M
1	BODY	A 351-CF8M	A 351-CN7M
2	SEAT	A 351-CF8M	A 351-CN7M
3	DISC	A 351-CF8M	A 351-CN7M
4	DISC CARRIER	A 351-CF8M	A 351-CN7M
5	COTTER PIN	A 276-316	A 351-CN7M
6	PIN	A 276-316	A 351-CN7M
7	HEX NUT	A 194-8M	A 351-CN7M
8	PLAIN WASHER	A 276-316	A 351-CN7M
9	STUD	A 193-B8	A 193-B8M
10	HEX NUT	A 194-8	A 194-8M
11	GASKET	PTFE	PTFE
12	COVER	A 351-CF8M	A 351-CN7M
13	NPT PIN PLUG	SS 316	A 351-CN7M



SIZE	INCH	1/2	3/4	1	1 1/2	2	2 1/2	3	4	5	6	8	10	12
	MM	15	20	25	40	50	65	80	100	125	150	200	250	300
A	INCH	4.25	4.62	5.00	6.50	8.00	8.50	9.50	11.50	13.00	14.00	19.50	24.50	27.5
	MM	108.0	117.4	127.0	165.1	203.2	215.9	241.3	292.1	330.2	355.6	495.3	622.3	698.5
A (BWE)	INCH					8.00	8.50	9.50	11.50	13.00	14.00	19.50	24.50	27.5
	MM					203.2	215.9	241.3	292.1	330.2	355.6	495.3	622.3	698.5
B	INCH	1/2	3/4	1	1.5	2	2.5	3	4	5	6	8	10	12
	MM	15	20	25	38	51	64	76	102	127	152	203	254	305
C	INCH	3.15	3.15	3.15	3.46	5.07	5.6	6.3	7.4	8.0	8.86	10.73	12.6	15.9
	MM	80	80	80	88	129	142	160	188	203	225	272.5	320	403
Weight	LBS	7	8	11	15	23	33	48	74	108	134	233	343	503
	KGS	3	4	5	7	10	15	22	34	49	61	106	156	228

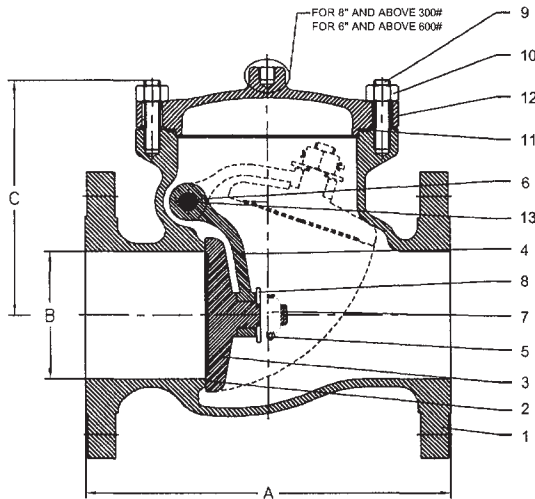


Stainless Steel Swing Check

Designed and tested to
ANSI B16.34, API 598,
API 6D face to face ANSI B16.10
Flanges to ANSI B16.5

Model #30-300, 30-600
Class 300-600 (1" to 12")

Unique full port
Heavy duty cast construction
Bolted cover
Precision machined self-aligning disc ensures perfect
seating of disc against body seat
Available in a wide range of alloys



NO.	PART NAME	A 351-CF8M	A 351-CN7M
1	BODY	A 351-CF8M	A 351-CN7M
2	SEAT	A 351-CF8M	A 351-CN7M
3	DISC	A 351-CF8M	A 351-CN7M
4	DISC CARRIER	A 351-CF8M	A 351-CN7M
5	COTTER PIN	A 276-316	A 351-CN7M
6	PIN	A 276-316	A 351-CN7M
7	HEX NUT	A 194-8M	A 351-CN7M
8	PLAIN WASHER	A 276-316	A 351-CN7M
9	STUD	A 193-B8	A 193-B8M
10	HEX NUT	A 194-8	A 194-8M
11	GASKET	PTFE	PTFE
12	COVER	A 351-CF8M	A 351-CN7M
13	NPT PIN PLUG	SS 316	A 351-CN7M

CLASS #300												CLASS #600											
SIZE	INCH	1	1½	2	2½	3	4	6	8	10	12	SIZE	INCH	1	1½	2	2½	3	4	6	8	10	12
	MM	25	40	50	65	80	100	150	200	250	300		MM	25	40	50	65	80	100	150	200	250	300
A	INCH	8.5	9.5	10.5	11.5	12.5	14.0	17.5	21.0	24.50	28.00	A	INCH	8.5	9.5	11.50	13.00	14.00	17.00	22.00	26.00	31.00	33.00
	MM	215.9	241.3	266.7	292.1	317.5	355.6	444.5	533.4	622.3	711.2		MM	215.9	241.3	292.1	330.2	355.6	431.8	558.8	660.4	787.4	838.2
A (BWE)	INCH	8.5	9.5	10.5	11.5	12.5	14.0	17.5	21.0	24.50	28.00	A (BWE)	INCH	8.5	9.5	11.50	13.00	14.00	17.00	22.00	26.00	31.00	33.00
	MM	215.9	241.3	266.7	292.1	317.5	355.6	444.5	533.4	622.3	711.2		MM	215.9	241.3	292.1	330.2	355.6	431.8	558.8	660.4	787.4	838.2
B	INCH	1	1.5	2	2.5	3	4	6	8	10	12	B	INCH	1	1.5	2	2.5	3	4	6	7.87	9.75	11.75
	MM	25	38	51	64	76	102	152	203	254	305		MM	25	40	51	65	76	102	152	200	248	299
C	INCH	3.15	3.46	5.9	6.4	7.3	8.1	9.6	10.73	12.6	15.9	C	INCH	3.15	3.46	5.9	6.8	7.4	8.5	10.0	10.73	12.6	16.5
	MM	80	88	149.4	162.6	185.8	206.4	244.6	272.5	320	403		MM	80	88	149.4	173.0	189.0	215.9	254.0	272.5	320	419
Weight	LBS	19	23	36	53	75	117	205	337	553	835	Weight	LBS	31	47	63	-	119	235	346	704	1177	1595
	KGS	9	10	16	24	34	53	93	153	251	379		KGS	14	21	29	-	54	107	157	319	534	723

Stainless Steel Swing Check

Model #30-900, 30-1500, 30-2500

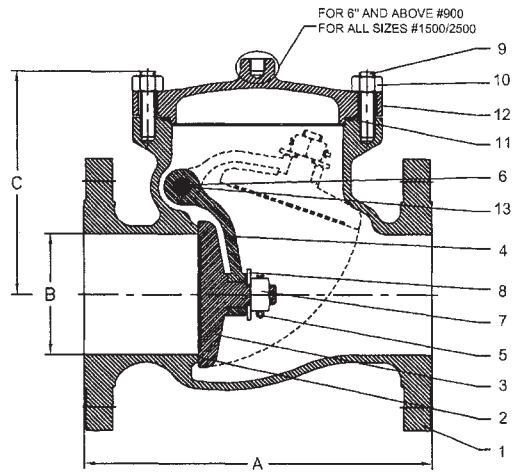
Class 900 (2" to 8")

Class 1500 (2" to 6")

Class 2500 (2" to 4")

Unique full port
Heavy duty cast construction
Bolted cover
Precision machined self-aligning disc ensures perfect seating of disc against body seat
Available in a wide range of alloys

**Designed and tested to
 ANSI B16.34, API 598,
 API 6D face to face ANSI B16.10
 Flanges to ANSI B16.5**



NO.	PART NAME	A 351-CF8M	A 351-CN7M
1	BODY	A 351-CF8M	A 351-CN7M
2	SEAT	A 351-CF8M	A 351-CN7M
3	DISC	A 351-CF8M	A 351-CN7M
4	DISC CARRIER	A 351-CF8M	A 351-CN7M
5	COTTER PIN	A 276-316	A 351-CN7M
6	PIN	A 276-316	A 351-CN7M
7	HEX NUT	A 194-8M	A 351-CN7M
8	PLAIN WASHER	A 276-316	A 351-CN7M
9	STUD	A 193-B8	A 193-B8M
10	HEX NUT	A 194-8	A 194-8M
11	GASKET	PTFE	PTFE
12	COVER	A 351-CF8M	A 351-CN7M
13	NPT PIN PLUG	SS 316	A 351-CN7M

CLASS #900							CLASS #1500						CLASS #2500				
SIZE	INCH	2	3	4	6	8	SIZE	INCH	2	3	4	6	SIZE	INCH	2	3	4
	MM	50	80	100	150	200		MM	50	80	100	150		MM	50	80	100
A	INCH	14.5	15.0	18.0	24.0	29.0	A	INCH	14.5	18.5	21.5	27.75	A	INCH	17.75	22.75	26.50
	MM	368.3	381.0	457.2	609.6	736.6		MM	368.3	469.9	546.1	704.85		MM	450.8	577.8	673.1
B	INCH	1.87	2.87	3.87	5.75	7.5	B	INCH	1.87	2.75	3.62	5.37	B	INCH	1.50	2.25	2.87
	MM	47.49	72.89	98.29	146.1	190.5		MM	47.49	69.85	91.94	136.34		MM	38.10	57.1	72.8
C	INCH	6.9	7.4	8.5	11.0	11.4	C	INCH	6.9	9.5	9.5	11.4	C	INCH	9.05	11.25	12.6
	MM	176.3	189.0	215.9	279.4	290.4		MM	176.3	241.3	241.3	288.9		MM	230	286	320





Stainless Steel Tilting Disc Check Valve

Model #31
150# CWP Design (2" to 24")

Precision machined tilting disc and seat for tight shutoff in back flow direction

Heavy duty 3-piece design allows the valve to be renewed with a seat and disc change

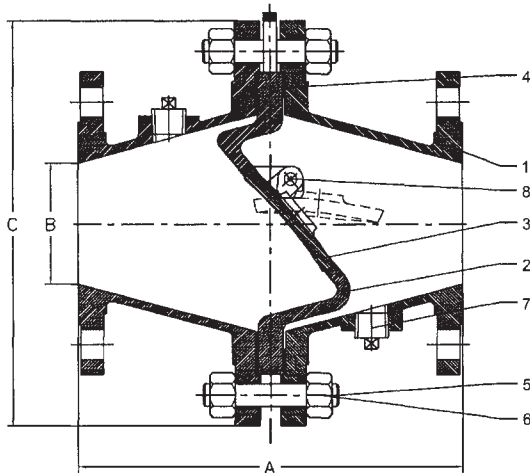
Offset center pivoted disc aids in quick opening and closing without slamming

150 PSI working pressure also operates at low pressure differentials

Can be mounted in any position from horizontal to vertical as long as fluid flow is upward

Large opening at seat for maximum flow rate

Available in a wide range of alloys



**Designed to ANSI B16.34,
tested to API 598. Flanges
to ANSI B16.5**

NO.	PART NAME	A 351-CF8	A 351-CF8M	A 351-CG8M
1	BODY	A 351-CF8	A 351-CF8M	A 351-CG8M
2	SEAT	A 351-CF8	A 351-CF8M	A 351-CG8M
3	DISC	A 351-CF8	A 351-CF8M	A 351-CG8M
4	GASKET	PTFE	PTFE	PTFE
5	STUD	A 193-B8	A 193-B8	A 193-B8M
6	HEX NUT	A 194-8	A 194-8	A 194-8M
7	NPT PLUG	SS 304	SS 316	A 276-317
8	PIN	SS 304	SS 316	A 276-317

SIZE	INCH	2	2½	3	4	6	8	10	12	14	16	18	20	24
	MM	50	65	80	100	150	200	250	300	350	400	450	500	600
A	INCH	8	8.5	9.5	11.5	14.0	18.0	21.75	25.5	28.0	30.0	31.0	32.5	34.0
	MM	203.2	216.0	241.0	292.0	356.0	458.0	552.0	648.0	711.0	762.0	787.0	825.0	864.0
B	INCH	2	2.5	3	4	6	8	10	12	13.25	15.25	17.25	19.25	23.25
	MM	51	64.0	76	102	152	203	254	305	337	387	438	489	591
C	INCH	8.5	9.0	10.0	11.0	13.5	16.0	19.0	21.0	23.5	25.0	27.5	32.0	38.75
	MM	217.0	228.6	254.0	279.0	343.0	406.0	483.0	533.0	597.0	635.0	698.0	813.0	984.0

Stainless Steel Globe Valve

Model #20

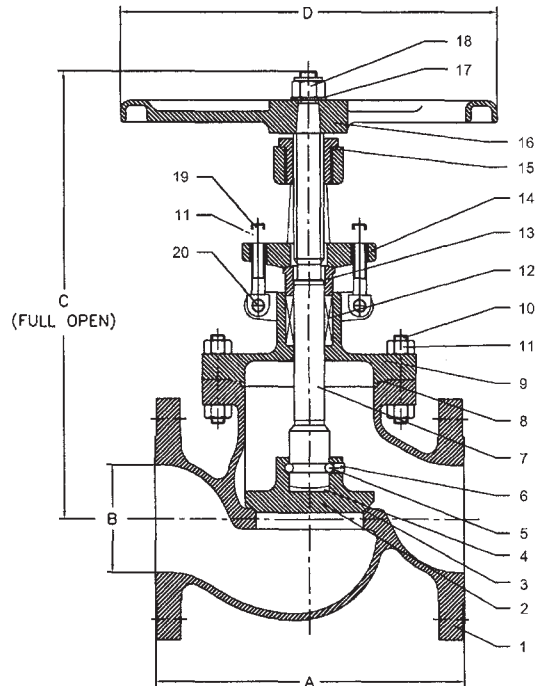
Class 150 (1" to 12")

Precision machined globe and seat for tight shutoff
Heavy duty cast construction
Body-guided disc insures alignment, low noise and
low vibration
Integral backseat
Locking handwheel nut
Rugged carbon steel handwheel
Available in a wide range of alloys



**Designed to ANSI B16.34,
 tested to API 598. Face
 to face ANSI B16.10,
 Flanges to ANSI B16.5**

NO.	PART NAME	A 351-CF8M	A 351-CN7M
1	BODY	A 351-CF8M	A 351-CN7M
2	SEAT	A 351-CF8M	A 351-CN7M
3	DISC	A 351-CF8M	A 351-CN7M
4	THRUST PAD	A 276-316	A 351-CN7M
5	BALL/STEM COLLAR	A 276-316	A 351-CN7M
6	SOCKET SET SCREW/RETAINER	A 276-316	A 351-CN7M
7	STEM	A 276-316	A 351-CN7M
8	SW GASKET	PTFE	PTFE
9	BONNET	A 351-CF8M	A 351-CN7M
10	STUD	A 193-B8	A 193-B8M
11	HEAVY HEX NUT	A 194-8	A 194-8M
12	GLAND PACKING	BRIADED PTFE	BRIADED PTFE
13	GLAND BUSH	A 276-316	A 351-CN7M
14	GLAND FLANGE	A 351-CF8M	A 351-CN7M
15	STEM NUT	AL BRONZE (B 148-Gr D)	AL BRONZE (B 148-Gr D)
16	HAND WHEEL	A 216-WCB/DUCTILE IRON	A 216-WCB/DUCTILE IRON
17	WASHER	A 276-304	A 276-304
18	NYLOCK NUT	A 276-304	A 276-304
19	GLAND BOLT	A 182-F304	A 182-F316
20	GROOVE PIN	A 276-304	A 276-304



SIZE	INCH	1	1½	2	2½	3	4	6	8	10	12
	MM	25	40	50	65	80	100	150	200	250	300
A	INCH	5	6.5	8	8.5	9.5	11.5	16	19.5	24.5	27.5
	MM	127	165.1	203.2	215.9	241.3	292.1	406.4	495.3	622.3	698.5
B	INCH	1	1.5	2	2.5	3	4	6	8	10	12
	MM	25	38	51	64	76	102	152	203	254	305
C	INCH	9.75	11	12.6	15.55	16.35	20.15	24.4	28.20	35.0	41
	MM	247.7	279.4	321	395	415.5	512	620	717	889	1042
D	INCH	5	8	8	10	10	14	18	20	25	25
	MM	127	203	203	254	254	356	457	508	635	635
Weight	LBS	13	25	31	46	68	96	180	285	429	646
	KGS	6	11	14	21	31	44	82	129	195	293

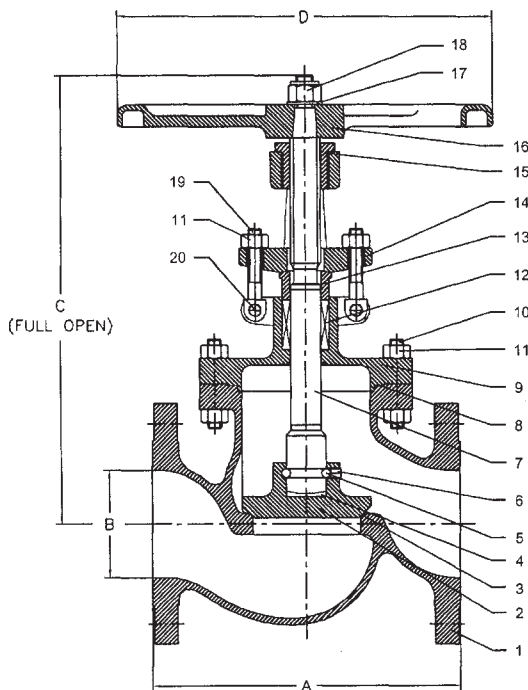


Stainless Steel Globe Valve

Designed to ANSI B16.34,
API 603, tested to API 598.
Face to face ANSI B16.10,
Flanges to ANSI B16.5

Model #20-300, 20-600
Class 300 (1" to 10")
Class 600 (1" to 8")

Precision machined globe and seat for tight shutoff
Heavy duty cast construction
Body-guided disc insures alignment, low noise and low vibration
Integral backseat
Locking handwheel nut
Rugged carbon steel handwheel
Available in a wide range of alloys



NO.	PART NAME	A 351-CF8M	A 351-CN7M
1	BODY	A 351-CF8M	A 351-CN7M
2	SEAT	A 351-CF8M	A 351-CN7M
3	DISC	A 351-CF8M	A 351-CN7M
4	THRUST PAD	A 276-316	A 351-CN7M
5	BALL/STEM COLLAR	A 276-316	A 351-CN7M
6	SOCKET SET SCREW/RETAINER	A 276-316	A 351-CN7M
7	STEM	A 276-316	A 351-CN7M
8	SW GASKET	PTFE	PTFE
9	BONNET	A 351-CF8M	A 351-CN7M
10	STUD	A 193-B8	A 193-B8M
11	HEAVY HEX NUT	A 194-8	A 194-8M
12	GLAND PACKING	BRIADED PTFE	BRIADED PTFE
13	GLAND BUSH	A 276-316	A 351-CN7M
14	GLAND FLANGE	A 351-CF8M	A 351-CN7M
15	STEM NUT	AL BRONZE (B 148-Gr D)	AL BRONZE (B 148-Gr D)
16	HAND WHEEL	A 216-WCB/DUCTILE IRON	A 216-WCB/DUCTILE IRON
17	WASHER	A 276-304	A 276-304
18	NYLOCK NUT	A 276-304	A 276-304
19	GLAND BOLT	A 182-F304	A 182-F316
20	GROOVE PIN	A 276-304	A 276-304

CLASS 300

SIZE	INCH	1	1½	2	3	4	6	8	10
	MM	25	40	50	80	100	150	200	250
A	INCH	8.0	9.0	10.5	12.5	14.0	17.5	22.0	24.5
	MM	203.2	228.6	266.7	317.5	355.6	444.5	558.8	622.3
B	INCH	1	1.5	2	3	4	6	8	10
	MM	25	38	51	76	102	152	203	254
C	INCH	9.75	11.0	12.6	16.35	20.15	24.4	28.20	35.0
	MM	247.7	279.4	321	415.3	512	620	716	889
D	INCH	5	8	8	10	14	18	20	25
	MM	127	203	203	254	356	457	508	635
Weight	LBS	21	38	49	97	147	297	508	858
	KGS	10	17	22	44	67	135	230	389

CLASS 600

SIZE	INCH	1	1½	2	3	4	6	8
	MM	25	40	50	80	100	150	200
A	INCH	8.5	9.5	11.5	14.0	17.0	22.0	26.0
	MM	215.9	241.3	292.1	355.6	431.8	558.8	660.4
B	INCH	1	1.5	2	3	4	6	7.87
	MM	25	38	51	76	102	152	200
C	INCH	12.0	13.5	16.0	19.4	22.1	26.6	30.7
	MM	304.8	342.9	406.4	415.5	561.0	576	780
D	INCH	8	10	10	14	18	20	25
	MM	203	254	254	356	457	508	635
Weight	LBS	-	56	83	142	324	727	1120
	KGS	-	25	38	64	147	330	508

 **Davis Valve**