



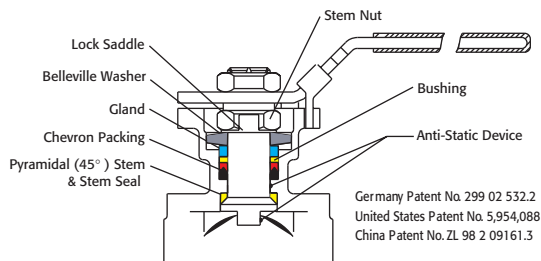
Triac 77 Series Ball Valves feature a high quality 316L investment casting. They are available with sanitary clamp or tube OD ends. Select the cavity filled or non-cavity filled design.

Superior leak protection is accomplished by using a live-loaded packing system featuring Belleville washers and double "V" ring packing. An ISO 5211 mounting pad is provided for easy automation.

| VALVE SIZE | VALVE Cv |
|------------|----------|
| 1/2" | 14 |
| 3/4" | 45 |
| 1" | 81 |
| 1-1/2" | 215 |
| 2" | 410 |
| 2-1/2" | 618 |
| 3" | 980 |
| 4" | 1840 |

Excellent for:

- Pharmaceutical
- Food and Beverage
- Paint and Solvents
- Viscous Fluids
- Confectionaries



Easy to Automate!

See automated data sheets for pre-sized assemblies



Pneumatic



Electric



**Series 77
Sanitary End
3-Piece Design**

Sizes 1/2"– 4"
Cavity Filled and
Non-Cavity Filled
ISO 5211 Mounting Pad
800/1000 PSI WOG (by size)
316L Body Ball and Stem
Full Port
Sanitary Clamp Ends or Tube
OD Ends

STANDARDS

ASME BPE-1997
ISO 5211/1, 5209, 5752, 7/1, 261
MSS SP25
BS 5351

**HOW TO ORDER
MANUAL VALVES**

SAMPLE PART #
77-SA-0050-PXX



See part number matrix for itemized options



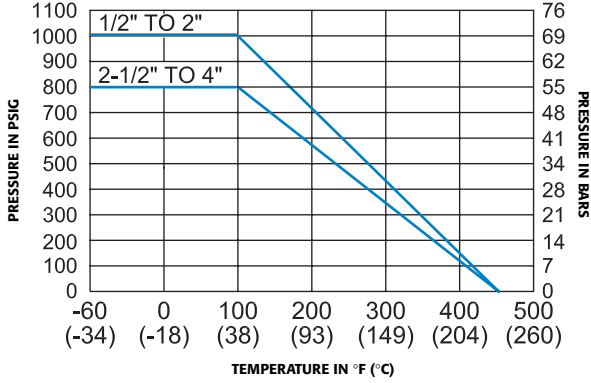
Triac Division
11363 Deerfield Rd.
Cincinnati, Ohio 45242
PHONE (513) 247-5465
FAX (513) 247-5462
e-mail: sales@a-tcontrols.com
www.a-tcontrols.com

Series 77

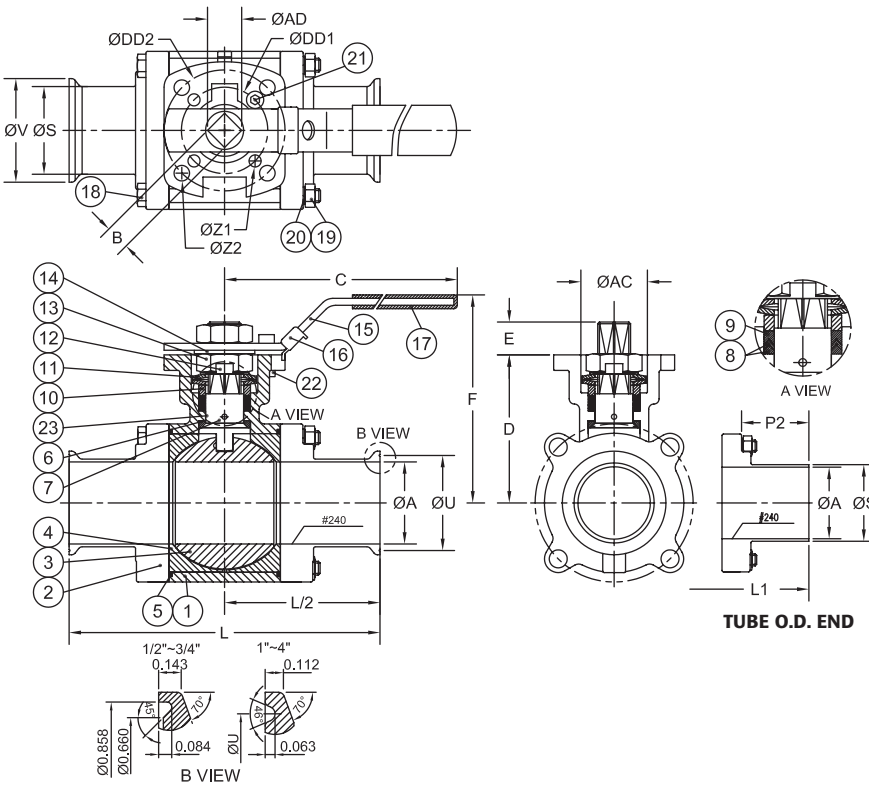
3-Piece "Sanitary End" Ball Valve Full Port

With or without cavity filler
240 Grit Internal Polish
Standard (15-20 RA)

Pressure vs. Temperature Chart
for PTFE Seats



CONSULT FACTORY FOR OTHER SEAT MATERIALS



| Size | Breakaway Torques for PTFE | |
|--------|----------------------------|---------------|
| | Non-Cavity Filled | Cavity Filled |
| 1/2" | 80 | 95 |
| 3/4" | 90 | 100 |
| 1" | 142 | 160 |
| 1-1/2" | 319 | 410 |
| 2" | 390 | 490 |
| 2-1/2" | 806 | 1010 |
| 3" | 921 | 1075 |
| 4" | 1317 | 1400 |

CONSULT FACTORY FOR OTHER SEAT MATERIALS

MATERIALS LIST

| NO. | PART NAME | QTY. | MATERIAL |
|-----|-------------------|-------|----------|
| 1 | Body | 1 | CF3M |
| 2 | End Cap | 2 | CF3M |
| 3 | Ball | 1 | 316SS |
| 4 | Seat | 2 | PTFE |
| 5 | Joint Gasket | 2 | PTFE |
| 6 | Stem Seal | 1 | PTFE |
| 7 | Stem | 1 | 316SS |
| 8 | Gland Packing | 1 Set | PTFE |
| 9 | Gland Packing | 1 | PTFE |
| 10 | Gland Bushing | 1 | 304SS |
| 11 | Belleville Washer | 2 | 301SS |
| 12 | Stop Washer | 1 | 304SS |
| 13 | Stem Nut | 2 | 304SS |
| 14 | Stem Washer | 1 | 304SS |
| 15 | Handle | 1 | 304SS |
| 16 | Locking Device | 1 | 304SS |
| 17 | Handle Sleeve | 1 | Vinyl |
| 18 | Bolt | # | 304SS |
| 19 | Nut | & | 304SS |
| 20 | Washer | & | 304SS |
| 21 | Stop Pin | 1 | 304SS |
| 22 | Pin Nut | 1 | 304SS |
| 23 | O-Ring | 1 | Viton® |

* For 1/2" to 2" - 2 pcs., For 2-1/2" to 4" - 3 pcs.

For 1/2" to 3" - 4 pcs.; For 4" - 6 pcs.

& For 1/2" to 2" - 4 pcs.; For 2-1/2" to 3" - 8 pcs., For 4" - 12 pcs.

1/2" to 2" single end, external thread
2-1/2" to 4" double ends, external thread

DIMENSIONS (IN)

| Size | A | B | C | D | DD1 | DD2 | E | F | L | L1 | P2 | S | U | V | Z1 | Z2 | AC | AD | LBS | ISO5211 |
|--------|------|-------|------|------|-------|-------|------|------|------|-------|------|------|------|------|------|------|------|-------|------|---------|
| 1/2" | 0.37 | 0.354 | 1.66 | 1.66 | 1.417 | 1.654 | 0.24 | 3.03 | 3.51 | 5.50 | 1.92 | 0.50 | - | 0.99 | 0.24 | 0.24 | 0.92 | 0.430 | 1.5 | F03/F04 |
| 3/4" | 0.62 | 0.354 | 1.89 | 1.89 | 1.417 | 1.654 | 0.26 | 3.27 | 4.00 | 5.75 | 1.96 | 0.75 | - | 0.99 | 0.24 | 0.24 | 0.92 | 0.430 | 1.8 | F03/F04 |
| 1" | 0.87 | 0.433 | 2.23 | 2.23 | 1.654 | 1.969 | 0.43 | 3.74 | 4.51 | 6.25 | 2.00 | 1.00 | 1.71 | 1.99 | 0.24 | 0.28 | 1.14 | 0.563 | 2.7 | F04/F05 |
| 1-1/2" | 1.37 | 0.551 | 3.05 | 3.05 | 1.969 | 2.756 | 0.55 | 5.00 | 5.52 | 7.50 | 2.23 | 1.50 | 1.71 | 1.99 | 0.28 | 0.34 | 1.54 | 0.744 | 7.0 | F05/F07 |
| 2" | 1.87 | 0.551 | 3.35 | 3.35 | 1.969 | 2.756 | 0.55 | 5.28 | 6.26 | 8.50 | 2.46 | 2.00 | 2.20 | 2.52 | 0.28 | 0.34 | 1.54 | 0.744 | 9.8 | F05/F07 |
| 2-1/2" | 2.37 | 0.669 | 4.28 | 4.28 | 2.756 | 4.016 | 0.66 | 6.54 | 6.85 | 9.75 | 2.55 | 2.50 | 2.78 | 3.05 | 0.34 | 0.47 | 2.07 | 0.885 | 19.6 | F07/F10 |
| 3" | 2.87 | 0.669 | 4.63 | 4.63 | 2.756 | 4.016 | 0.70 | 6.93 | 7.61 | 10.50 | 2.69 | 3.00 | 3.28 | 3.58 | 0.34 | 0.47 | 2.07 | 0.885 | 25.9 | F07/F10 |
| 4" | 3.83 | 0.669 | 5.22 | 5.22 | 2.756 | 4.016 | 0.66 | 7.48 | 8.90 | 12.50 | 3.14 | 4.00 | 4.34 | 4.68 | 0.34 | 0.47 | 2.07 | 0.885 | 47.4 | F07/F10 |

Tube O.D. According to ASME BPE 1997/2000