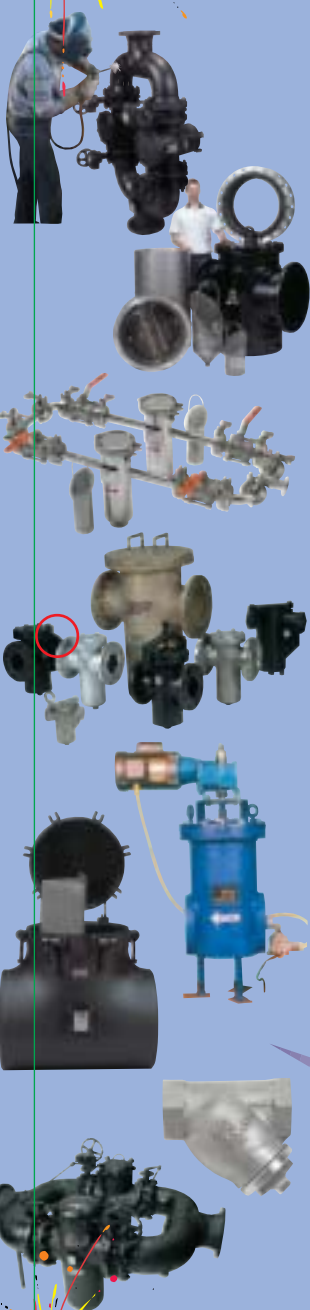


Sure Flow
Equipment Inc.

Duplex Strainers



www.sureflowequipment.com



Index

| Index | Pages |
|--|---------|
| Strainer Applications | 3 |
| DUPLEX STRAINERS | |
| Tri-Ball Duplex - 3/4 inch to 4 inch | 4 - 6 |
| Plug Duplex - 5, 6 & 8 inch | 7 - 8 |
| Pressure Drop Chart Duplex Strainers | 9 |
| Fabricated Dual Basket Strainers | 10 - 13 |
| Perforated Metal & Mesh Screens | 14 |
| Warranty | 15 |

A duplex, or double basket strainer can operate continuously and never has to be shut down for cleaning. This type of basket strainer has two separate strainer basket chambers, not just one like a simplex strainer. These chambers are put into service independently. When one basket chamber becomes full, the flow is switched to the other one. The strainer basket is then removed from the out-of-service chamber, cleaned and replaced, ready for use again.



Dual Basket Strainers - an economical alternative to the conventional duplex strainers.

Refer to pages 10 - 13.

Sure Flow Equipment Inc., for many years, has provided industry with custom ENGINEERED FABRICATED STRAINERS to many design codes. All products are designed and manufactured in accordance with the requirements of ASME SECTION VIII, DIV 1. U stamp and UM Stamp now available!

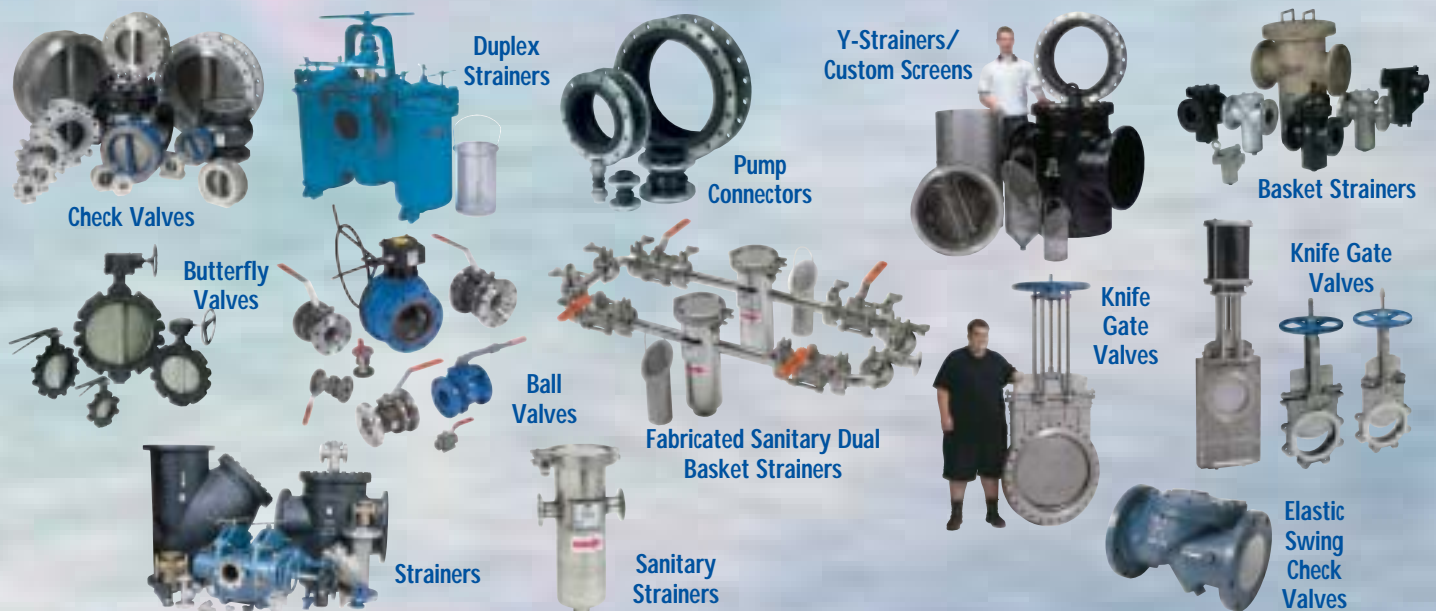
Sure Flow's initial focus was to supply the marketplace with an extensive line of Y-Type Strainers, Simplex Strainers, Duplex and Fabricated Strainers. The product line provides a solution to every filtration problem in every industry and if we haven't already solved your problem, our Engineers will develop the best answer.

In addition to Pipeline Strainers, Sure Flow offers Wafer Double Door Check Valves, Silent Check Valves, Butterfly Valves 2" to 48", Knife Gate Valves and Expansion Joints and Automatic Strainers.

Sure Flow products are available in Cast Iron, Steel, Stainless, Bronze, and any exotic Alloy, in sizes from 1/4" to 60", 125 lb. to 2500 lb. Class, in NPT, Flanged, Butt Weld and Socket Weld.

Many design codes are available.

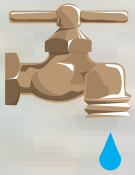
The Universe of Industrial Valves from Sure Flow



Strainer Applications

The pipeline strainers in this catalog have a wide range of industrial and marine applications. In addition to oil and water service, the strainers detailed in this catalog are suitable for removing impurities from gasoline, chemicals, paint, food process and many other process fluids.

A strainer is an inexpensive "insurance" for protecting valuable pumps such as meter pumps, for example. There is often unwanted matter present which can cause serious problems. Dirt, foreign matter, or even clumps of product itself, can clog or damage critical and expensive equipment. Another factor to consider is the cost of downtime. **STRAINERS** are the solution.



Strainer Applications

Water

The most popular application. From waste and water treatment, boiler feed pumps, condensate service, irrigation and general and intermediate water service.

Steel Mills

Cooling water for furnaces, rolling mills, lubricating oil, fuel oil, etc.

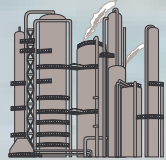


Petrochemical

Refining crude oil to gasoline. Protection of pumps, meters, etc.

Utilities

Protection for heat exchangers, pumps, and condensers, strain cooling water, screen transformer oil, etc.

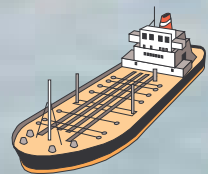


Chemical Plants

Separation of solid impurities from liquids. Protection of process equipment.

Pulp and Paper

An industry which utilizes extensive filtration of water, coatings and pigments.

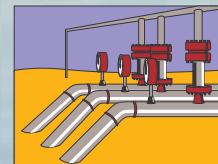


Marine

General filtration of seawater in cooling, sanitary, and general cleaning of lines. Fuel, hydraulic fluid, lubricating systems, etc.

Process Equipment

Protection of vital equipment such as flow meters, spray nozzles, heat exchangers, condensers, pumps, etc.



Other industrial applications include food processing, paint, cement, ink, pharmaceutical, cosmetics, tank car and trucks, ceramics and many more.

If it flows, a strainer should be there!

Tri Ball Duplex Strainer

Cast Iron, Cast Steel and Cast 316SS, Cast Bronze •
Threaded (T) & Flanged (F) • Sizes 3/4" to 4"

Type D125CIT & D125CIF Cast Iron; D150TCS & D150FCS Cast Steel; D150TSS & D150FSS Cast 316SS; D150TBZ & D150FBZ Cast Bronze



Tri Ball Duplex Strainers remove dirt and debris from pipelines and protects sensitive system components. The duplex features a design that makes strainer basket servicing a no-hassle operation. The duplex keeps the chamber from overflowing during service. This gives you time to clean or replace the strainer basket without ever having to worry about leakage and overflow. And ... without overflow, there's no need to clean up after servicing the strainer basket.

A unique flow diverter valve cartridge in the Tri Ball isolates the two strainer basket chambers and prevents fluid bypass. An easy-to-turn handle operates the cartridge and diverts the system flow from one chamber to the other — the flow in the pipeline is never shut off.

When a strainer basket needs to be cleaned, the lever handle is turned to take it out of service and to divert the flow through the other chamber. The position of the handle clearly indicates at all times which chamber is in service.

No special tools are needed to access the strainer basket for cleaning. The chamber is first drained and then the cover is lifted and swung clear of the chamber opening. The dynamic diverter cartridge seals prevent fluid bypass into the out-of-service chamber — making for easy, hassle-free strainer basket servicing.



Tri Ball Duplex Selection Table

| Body and Cartridge Material | Connections | Sizes | | Rating | Seat/Seals | Diverter Balls |
|--|--------------|----------------------------------|--------------------------------------|-------------------------------|--------------------|-----------------|
| | | Inches | Prefix | | | |
| Iron (CI) | Threaded (T) | 3/4, 1, 1 1/4 1 1/2, 2, 2 1/2 | 0075, 0100, 0125 0150, 0200, 0250 | 125# ANSI 200 PSIG @ 150°F | Teflon/ Buna N* | Stainless Steel |
| | Flanged (F) | 1, 1 1/2, 2 2 1/2, 3, 4 | 0100, 0150, 0200 0250, 0300, 0400 | | | |
| Bronze (BZ) Carbon Steel (CS) Stainless Steel (SS) | Threaded (T) | 3/4, 1, 1 1/4 1 1/2, 2, 2 1/2 | 0075, 0100, 0125 0150, 0200, 0250 | 150# ANSI 200 PSIG @ 150°F | Teflon/ Buna N* | Stainless Steel |
| | Flanged (F) | 1, 1 1/2, 2 2 1/2, 3, 4 | 0100, 0150, 0200 0250, 0300, 0400 | | | |

*Viton® standard for stainless steel. • For Liquid Service •
5/32" SS perf basket standard for all sizes.

Ordering Information

Example: Include full description

Size Model Screen
(Prefix) Number Opening

0400 - D125CIF-156

4" Flgd. duplex strainer, cast iron,
125# ANSI flanges, with 5/32" perf. basket

Notes:

Manufacturer reserves the right to modify dimensions, materials, or design. Contact factory for certification.



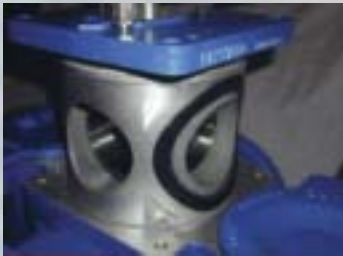
Toll Free: 1-800-263-8251 Toll Free Fax: 1-800-876-1164
International 1-905-335-1350 International Fax: 1-905-332-4993
Email: info@sureflowequipment.com www.sureflowequipment.com



Tri Ball Duplex Strainer



Standard body vent on top of strainer makes venting quick and easy.



Should the diverter valve require service, it slides right out the top of the strainer body.



A minimum of parts, easily replaced, makes service a snap. Exploded view shows simplicity of design.

The heart of the **Tri Ball** is the unique flow diverter cartridge that features a patent pending, highly dynamic sealing system on the diverter balls that ensures exceptionally long seat life and positive sealing. The **Tri Ball** design works so well that there is no need for manual internal or external ball support adjustments — and the low operating torque means the strainer can be operated with an easy-turn lever handle. A gear box is not needed.

A double sealing system on both the upper and lower stems guards against any possible leakage. Special reinforced polymer seats are used for extended service life.

Should cartridge service become necessary, it's easy to accomplish. Just remove four bolts and the cartridge comes right out through the top of the strainer. There's no need to take the strainer completely apart or to remove it from the line.

The compact, low profile Tri Ball fits into spaces ordinary strainers might not, yet it still uses full-size strainer baskets with a low pressure drop performance.

And, there's a strainer basket for every application. The standard basket is made of Type 316 Stainless Steel; however, if required, Monel is available. Baskets with openings from 3/4" down to 45 microns are offered: choose the best size for your application — with no compromises.

For easy basket servicing there is a 1/4" drain plug on each strainer basket chamber. Additionally, there is an easy-to-access vent valve on top of the strainer body.

Finally, standard foot mounting pads insure a rock solid installation no matter where the strainer is installed.

Available options for the Tri Ball include differential pressure gauges, with or without switches, and magnetic separators installed in the strainer basket for removing fine ferrous particulate matter from the process media.

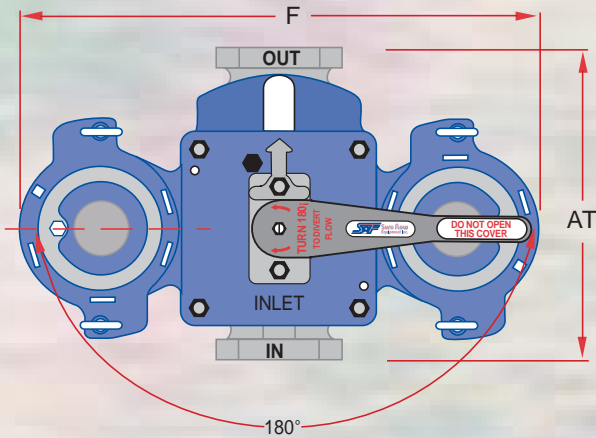
*Gauges are not available for NPT threaded strainers.

Notes:

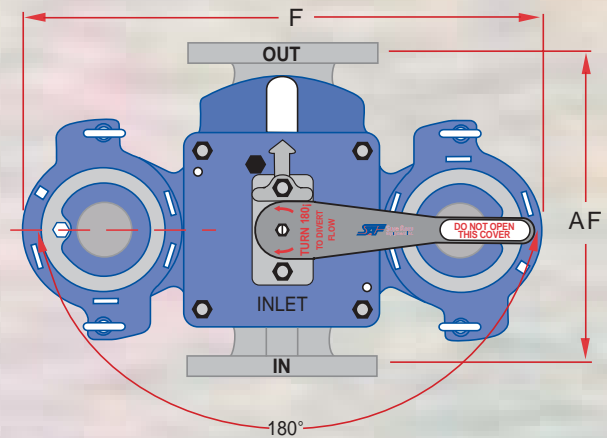
- Seats are TFE for all materials of construction.
- Iron, bronze and carbon steel have buna seals and o-rings.
- Stainless steel has viton seals and o-rings.
- ONLY the flanged design can be tapped 1/4" NPT at the inlet/outlet for gauge connections
- ALL strainers have feet for mounting.
- 4" strainer comes standard with a pressure equalizer assembly - not installed.
- 1/4" NPT cover vent taps are standard.



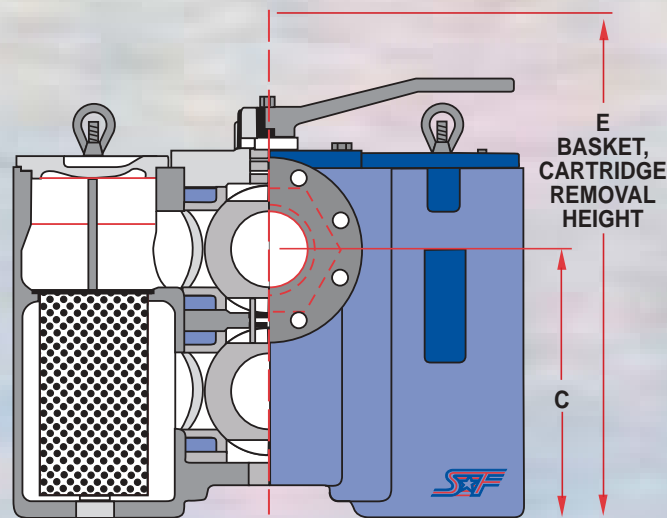
Tri Ball Duplex Strainer



Top View: Threaded Model



Top View: Flanged Model



Front View: Flanged and Threaded Models

Dimensions and weights are for reference only. Contact Sure Flow for certified drawings.

Dimensional Data

| Size | | AF | AT | C | E | F | Shipping Weight (lbs.) | | | | | |
|--------|--------|--------|-------|---------|--------|--------|------------------------|----------|---------|----------|-------------|----------|
| Inches | Prefix | | | | | | Cast Iron | | Bronze | | Carbon & SS | |
| | | | | | | | Flanged | Threaded | Flanged | Threaded | Flanged | Threaded |
| 3/4 | 0075 | – | 5 1/2 | 5 | 13 3/8 | 10 1/2 | – | 45 | – | 56 | – | 52 |
| 1 | 0100 | 6 7/8 | 5 1/2 | 5 | 13 3/8 | 10 1/2 | 52 | 45 | 65 | 56 | 65 | 52 |
| 1-1/4 | 0125 | 6 7/8 | 7 1/2 | 6 13/16 | 17 | 13 1/4 | – | 90 | – | 115 | – | 110 |
| 1-1/2 | 0150 | 9 3/8 | 7 1/2 | 6 13/16 | 17 | 13 1/4 | 109 | 90 | 130 | 115 | 120 | 110 |
| 2 | 0200 | 10 5/8 | 10 | 8 3/8 | 21 3/4 | 17 3/8 | 190 | 180 | 230 | 220 | 210 | 195 |
| 2-1/2 | 0250 | 10 3/4 | 10 | 8 3/8 | 21 3/4 | 17 3/8 | 210 | 180 | 260 | 220 | 235 | 195 |
| 3 | 0300 | 13 1/2 | – | 8 7/8 | 26 1/2 | 22 3/4 | 340 | – | 380 | – | 460 | – |
| 4 | 0400 | 16 | – | 13 1/4 | 33 | 24 3/4 | 430 | – | 535 | – | 460 | – |

1/4" NPT cover vent taps are standard on all strainers.

1/4" NPT basket well drain connectors are standard on all strainer sizes.

Plug Duplex Strainer

Cast Iron, Cast Steel and Cast 316SS, Cast Bronze •
Flanged (F) • Sizes 5", 6", 8"

Type DF125CI Cast Iron; DF150CS Cast Steel; DF150SS Cast 316SS; DF150BZ Cast Bronze



The Plug Type Duplex Strainer is a simple, economical, and trouble free design ... time tested in applications around the world over many years. This type of strainer is actually a high quality, pressure rated plug valve with integral straining baskets.

Switching the flow from one basket to the other is accomplished by moving the operating handle through a 90 degree arc. The design is such that is impossible for this operation to stop the flow because of the unique port design in the diverter plug. The entire switching operation takes less than 30 seconds. No tools are needed. The plug is automatically positioned each time in exactly the right spot by integral stops.

Before operating the handle a manual, integral lifting jack, built into the strainer is used to lift the diverter plug off of its seat. After the switching operation the lifting jack is used to reseat the plug. The lifting jack is specially designed to lift and seat the plug easily, even under high pressures. A built in stop limits the distance the diverter plug can be raised. This minimizes the possibility of material bypassing the plug while it is rotated. It also prevents debris from building up under the plug and making it difficult to reseat.

Other important features of the plug type Duplex Basket Strainer's include quick opening, swing away yoke design covers. No tools are required to remove the covers for quick and easy access to the strainer baskets, and they go back on just as fast as they came off.

Draining of the basket chambers is simplified with the standard NPT drain taps - and all sizes are provided with mounting legs for bolting the strainer to the floor for a rock solid installation.

The plug type Duplex Basket Strainer is your best choice for most applications. Its rugged design and ease of operation have made it the duplex strainer of choice around the world in hundreds of different industries.

Plug Duplex Selection Table

| Body Material | Connections | Sizes | | Plug Material | Seals | Rating |
|----------------------|--------------|---------|------------------|-------------------------------------|--------|-----------------------------------|
| | | Inches | Prefix | | | |
| Iron (CI) | Flanged 125# | 5, 6, 8 | 0500, 0600, 0800 | Iron (CI) or Bronze (BZ) | Buna N | 200 PSIG @ 100°F. 5" and 6" sizes |
| Bronze (BZ) | Flanged 150# | 5, 6, 8 | 0500, 0600, 0800 | | | |
| Carbon Steel (CS) | Flanged 150# | 6, 8 | 0600, 0800 | Bronze (BZ) or Stainless Steel (SS) | Viton | 150 PSIG @ 100°F. 8" size. |
| Stainless Steel (SS) | Flanged 150# | 6, 8 | 0600, 0800 | Stainless Steel (SS) | | |

C_v Factors*

| Size | Value |
|------|-------|
| 5" | 300 |
| 6" | 420 |
| 8" | 900 |

* For water with clean perforated basket

• For Liquid Service •
5/32" SS perf basket standard for all sizes.

Ordering Information

Example: Include full description

Size Model Screen
(Prefix) Number Opening

0600 - DF125CI-156

6" Flgd. duplex strainer, cast iron, 125# ANSI flanges, with 5/32" perf. basket

Notes:

Manufacturer reserves the right to modify dimensions, materials, or design. Contact factory for certification.



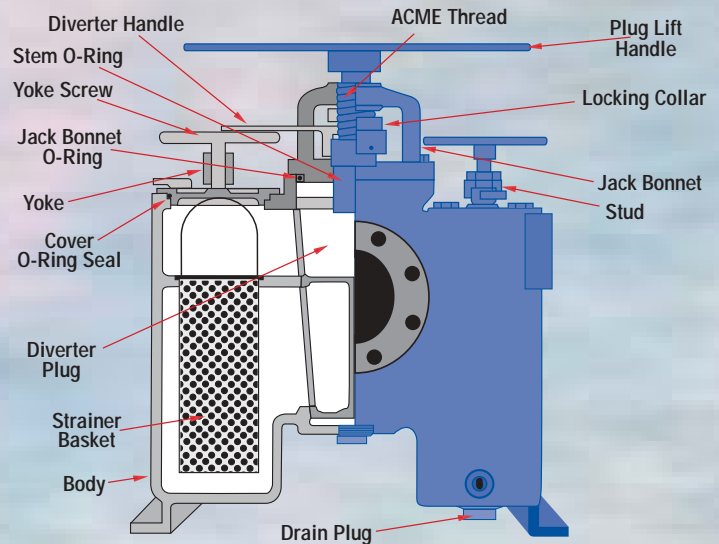
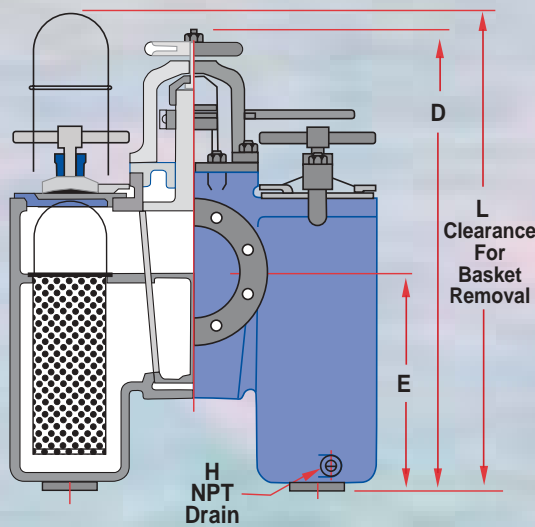
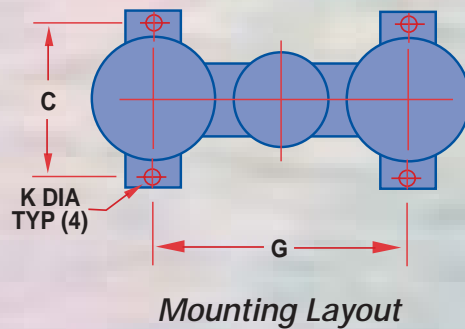
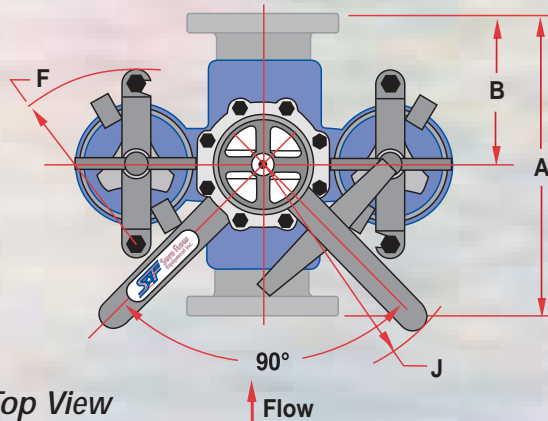
Toll Free: 1-800-263-8251 Toll Free Fax: 1-800-876-1164
International 1-905-335-1350 International Fax: 1-905-332-4993
Email: info@sureflowequipment.com www.sureflowequipment.com



Plug Duplex Strainer

Options

- ◆ Ductile iron construction
- ◆ Basket perforations from 1/32" to 1/2"
- ◆ Basket mesh from 20 to 400
- ◆ Monel baskets
- ◆ Viton, PTFE, or EPDM seals
- ◆ Vent valves
- ◆ Drain valves
- ◆ 1/4" NPT taps
- ◆ Magnetic basket inserts
- ◆ Pressure differential gauge and switch connections
- ◆ Steam jacket



Dimensions and weights are for reference only. Contact Sure Flow for certified drawings.

Dimensional Data

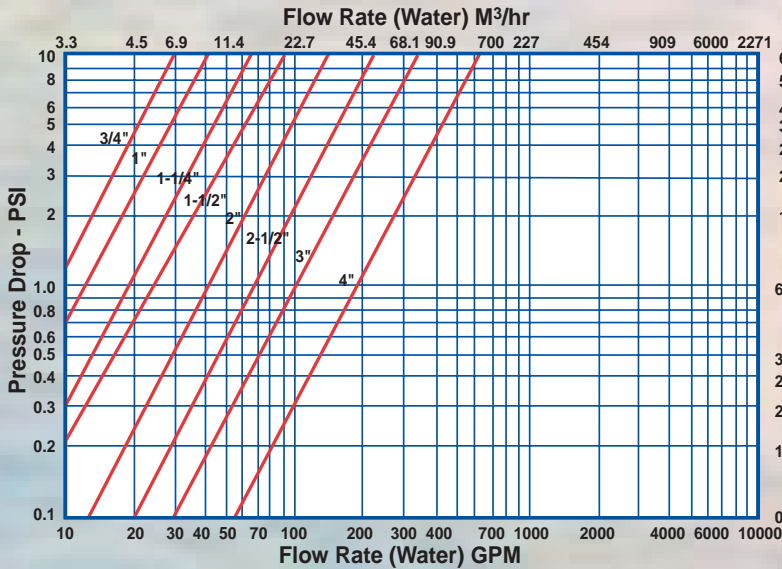
| Size | | A | B | C | D | E | F | G | H | J | K | L | Shipping Weight (lbs.) | | | |
|--------|--------|--------|--------|--------|--------|---------|--------|---------|-----|--------|-------|----|------------------------|--------|--------------|-----------------|
| Inches | Prefix | | | | | | | | | | | | Cast Iron | Bronze | Carbon Steel | Stainless Steel |
| 5 | 0500 | 18 3/8 | 9 | 9 3/4 | 33 1/4 | 14 3/4 | 10 1/4 | 17 3/16 | 3/8 | 19 3/4 | 9/16 | 41 | 463 | 473 | - | - |
| 6 | 0600 | 22 | 12 7/8 | 12 1/2 | 36 1/4 | 19 1/2 | 11 3/4 | 20 3/4 | 3/8 | 19 3/4 | 5/8 | 42 | 575 | 699 | 690 | 738 |
| 8 | 0800 | 25 | 14 | 17 | 50 5/8 | 23 1/16 | - | 30 3/4 | 1/2 | 28 | 15/16 | 56 | 1725 | 2070 | 1851 | 1920 |

Pressure Drop Curves

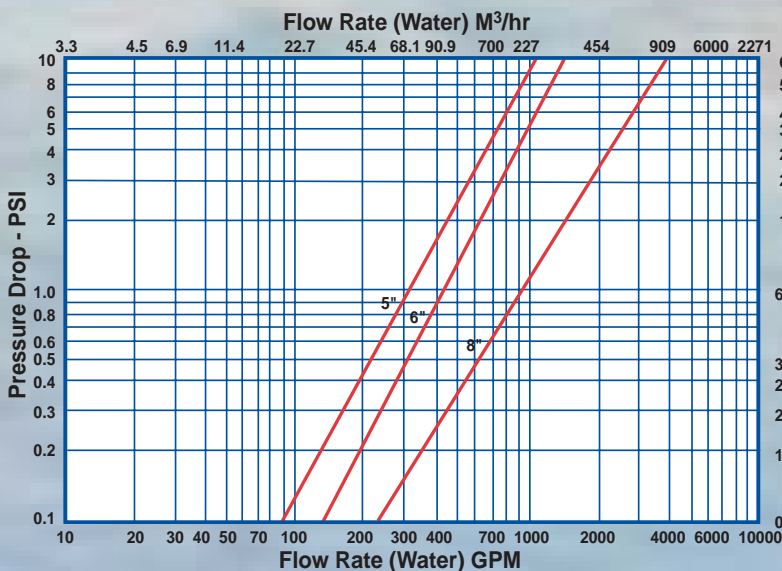
Pressure Drop vs. Flow Rate

These curves are for clean baskets, without mesh liners - and with WATER flowing through the strainer. For mesh-lined baskets and/or other fluids, you must first compute a correction factor.

Model D125 and D150 Duplex - 3/4" Through 4"



Model DF125 and DF150 Duplex - 5" Through 8"



Fabricated Dual Basket Strainers

Dual Basket Strainers Cast Iron, Carbon Steel, Stainless Steel

Sure Flow Dual Basket Strainers are an innovative and economical alternative to conventional Duplex Strainers. They are designed for applications where flow cannot be shut down to service the strainer screen. Changeover is accomplished by use of a handwheel operator on a buna lined (standard), butterfly valve. This arrangement provides a bubble-tight shut off between basket chambers, essential for use in gas or negative head pump suction systems. Basket and flange sizes can be designed to specific requirements by incorporating Sure Flow Fabricated Strainers. Standard units are in Cast Iron with 125# ANSI flanged connections, and Carbon or Stainless Steel with 150# ANSI flanged connections. Many other options are available including higher pressure ratings, automatic air vents, quick opening covers, special internal coatings, backwash connections and more. We will help you select the best Sure Flow Dual Basket Strainer for your specific application.



Sure Flow Model BDB bolted design Dual Basket Strainer is standard in Cast Iron with 125# ANSI flanged connections in sizes 2" through 18". Baskets can be supplied with bolted or quick release clamped covers.

Consult factory for dimensional data and other specifications.



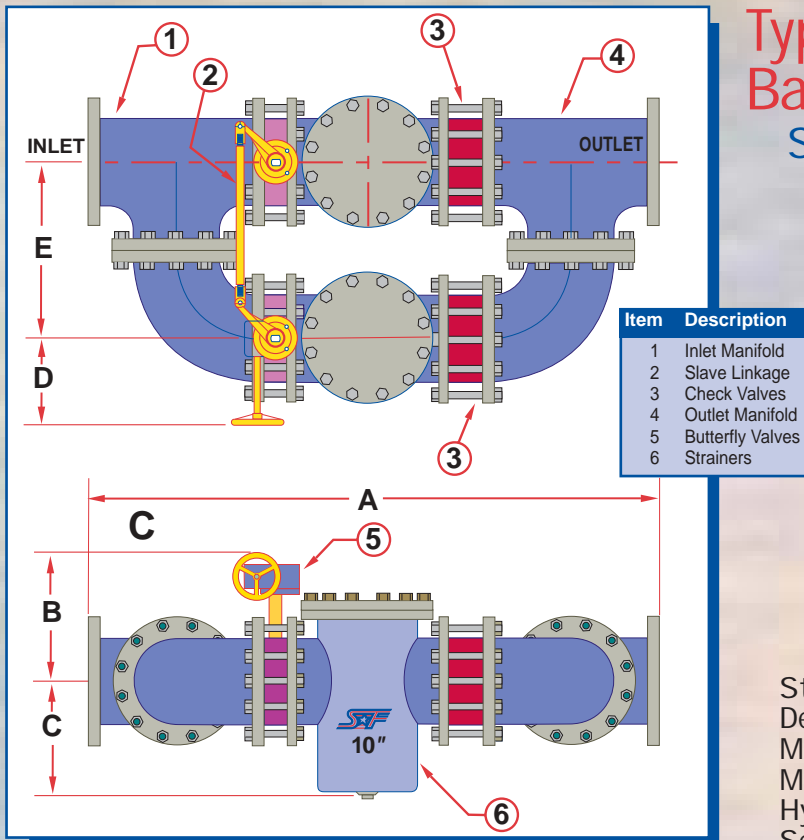
Sure Flow Model DB welded design Dual Basket Strainers are a very economical alternative to standard uni-casting duplex strainers in cast steel and stainless steel materials. Because they are fabricated to your specific requirements, they are available in up to 2500 lb ANSI ratings, and with your choice of valves.

Fabricated Dual Basket Strainers

Type BDB125 Bolted Dual Basket Strainer - Cast Iron

Slave Linked Butterfly's

Dimensional Data



| Size | | A | B | C | D | E |
|--------|--------|---------|--------|--------|--------|----|
| Inches | Prefix | | | | | |
| 2 | 0200 | 30 | 10 1/2 | 5 | 6 | 9 |
| 2 1/2 | 0250 | 32 3/4 | 11 | 5 3/8 | 6 1/2 | 10 |
| 3 | 0300 | 36 | 11 1/2 | 6 1/2 | 7 | 11 |
| 4 | 0400 | 42 | 12 | 8 | 7 1/2 | 13 |
| 5 | 0500 | 48 | 12 1/2 | 8 | 8 | 15 |
| 6 | 0600 | 52 | 13 | 8 5/8 | 8 1/2 | 16 |
| 8 | 0800 | 61 | 14 1/2 | 11 3/4 | 9 1/2 | 18 |
| 10 | 1000 | 70 3/4 | 17 | 13 3/4 | 11 | 22 |
| 12 | 1200 | 83 | 19 | 16 3/8 | 12 1/2 | 24 |
| 14 | 1400 | 96 1/2 | 20 | 22 1/4 | 13 1/2 | 28 |
| 16 | 1600 | 104 3/4 | 21 | 23 1/4 | 14 1/2 | 30 |
| 18 | 1800 | 123 3/4 | 23 | 24 | 15 | 37 |

*Larger sizes available. Consult factory.

Standards: *ANSI B16.5*

Design Code: *ASME B31.1*

Max. Working Pressure: *200 psig*

Max. Working Temperature: *200°F*

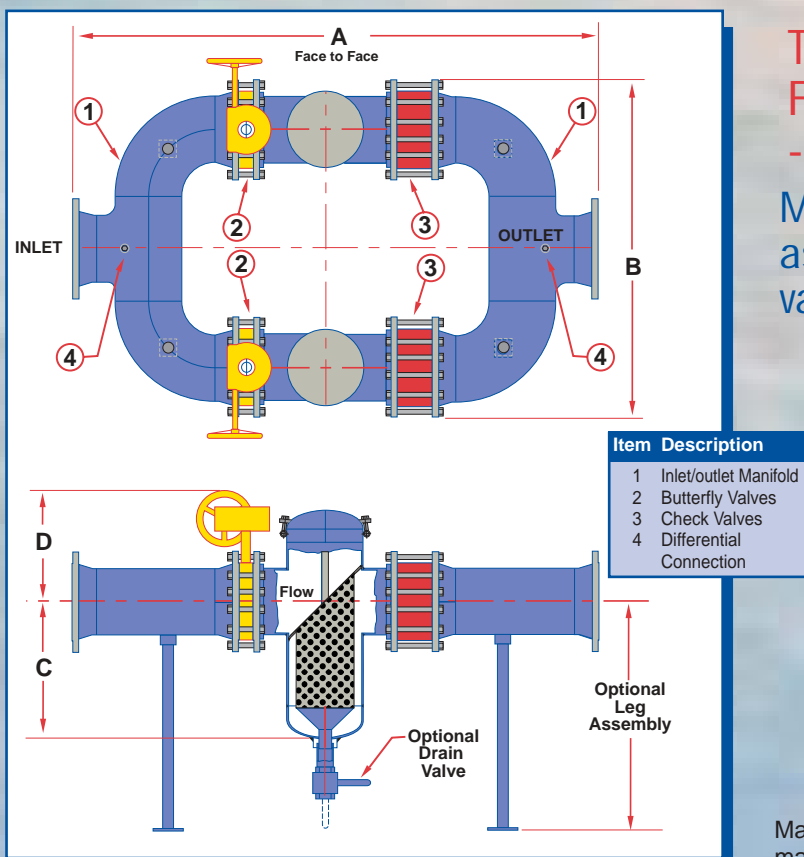
Hydrostatic Test: *300 psig for 1/4 hour*

Service: *W.O.G.*

Type DBH150/DBH150SS Fabricated Dual Basket Strainer - Carbon Steel, Stainless Steel

Manual Butterfly showing leg assembly - hinge cover and drain valve - manual butterfly

Dimensional Data

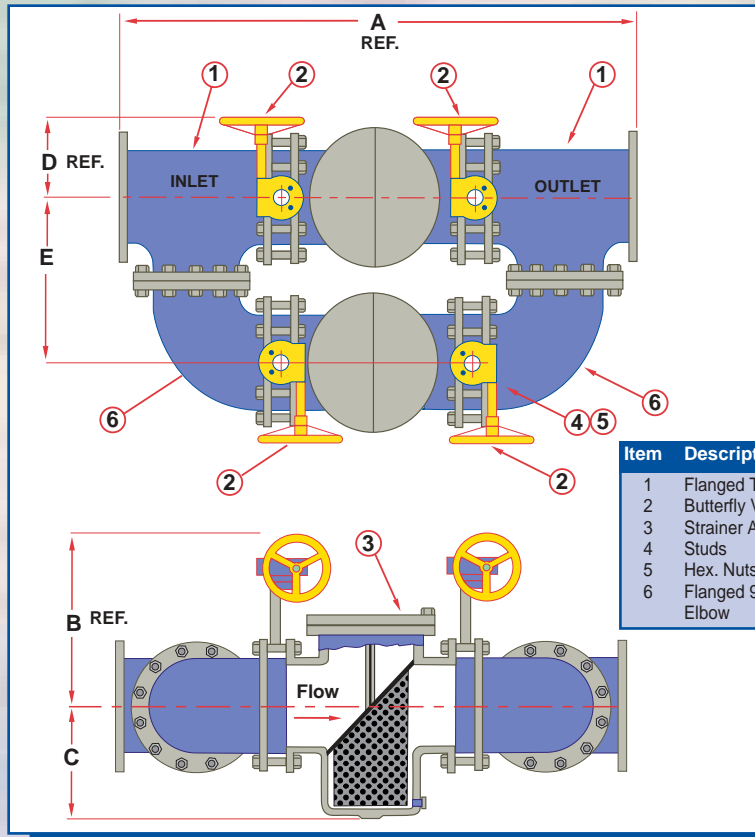


| Size | | A | B | C | D |
|--------|--------|---------|--------|----|--------|
| Inches | Prefix | | | | |
| 2 | 0200 | 36 5/8 | 15 | 8 | 10 7/8 |
| 2 1/2 | 0250 | 39 | 18 | 8 | 11 3/8 |
| 3 | 0300 | 41 3/4 | 20 1/4 | 9 | 11 5/8 |
| 4 | 0400 | 46 3/4 | 25 1/4 | 11 | 12 3/8 |
| 6 | 0600 | 59 7/8 | 34 1/4 | 15 | 13 1/2 |
| 8 | 0800 | 72 3/8 | 43 1/2 | 17 | 17 3/4 |
| 10 | 1000 | 82 7/8 | 53 | 20 | 18 7/8 |
| 12 | 1200 | 94 7/8 | 63 | 26 | 20 1/2 |
| 14 | 1400 | 106 | 71 | 29 | 23 1/2 |
| 16 | 1600 | 114 5/8 | 79 1/2 | 32 | 29 |
| 18 | 1800 | 125 7/8 | 88 | 34 | 30 |
| 20 | 2000 | 142 | 97 1/2 | 39 | 32 |
| 24 | 2400 | 162 1/2 | 114 | 45 | 36 |

*Larger sizes available. Consult factory.

Manufacturer reserves the right to modify dimensions, materials, or design. Contact factory for certification.

Fabricated Dual Basket Strainers



Type BDB125 Dual Basket Strainer with Four Manual Butterfly's - Cast Iron

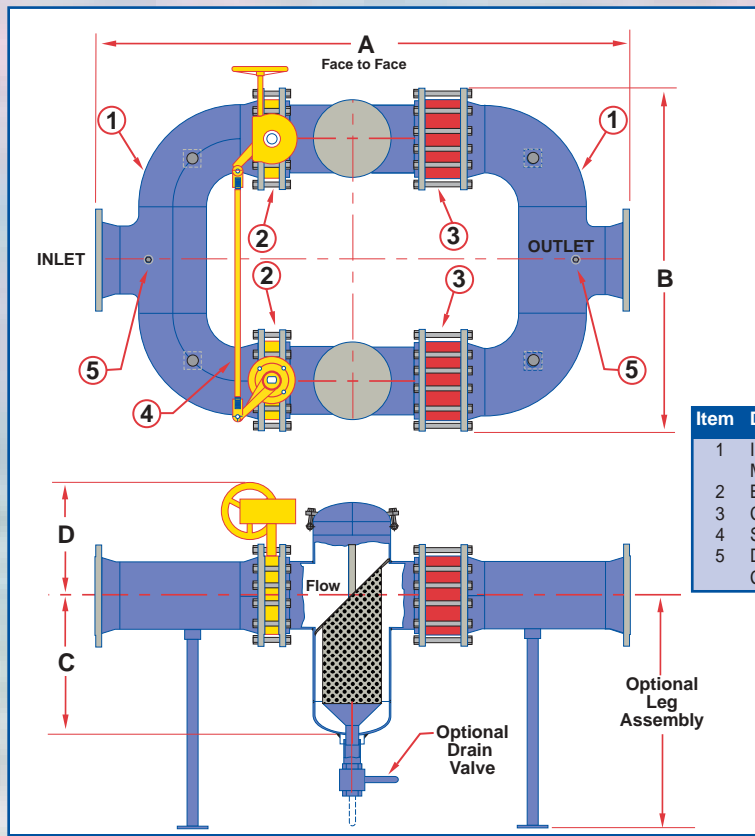
Dimensional Data

| Size | | A | B | C | D | E |
|--------|--------|---------|--------|--------|-------|----|
| Inches | Prefix | | | | | |
| 2 | 0200 | 29 5/8 | 8 1/2 | 5 | 6 | 9 |
| 2 1/2 | 0250 | 32 | 9 | 5 3/8 | 6 | 10 |
| 3 | 0300 | 35 5/8 | 9 1/4 | 6 1/2 | 6 | 11 |
| 4 | 0400 | 41 3/4 | 10 | 8 | 6 | 13 |
| 5 | 0500 | 47 5/8 | 10 1/2 | 8 | 8 | 15 |
| 6 | 0600 | 51 3/8 | 11 | 8 5/8 | 6 | 16 |
| 8 | 0800 | 59 9/16 | 13 1/4 | 11 3/4 | 9 1/4 | 18 |
| 10 | 1000 | 69 5/8 | 14 1/2 | 13 3/4 | | 22 |
| 12 | 1200 | 80 1/2 | 16 | 16 3/8 | | 24 |

*Larger sizes available. Consult factory.

Also available is our model BDBC125 with clamp covers. Consult factory for details.

Manufacturer reserves the right to modify dimensions, materials, or design. Contact factory for certification.



Type DBH150/DBH15OSS Dual Basket Strainer

Slave Linked Butterfly's with Hinged Covers

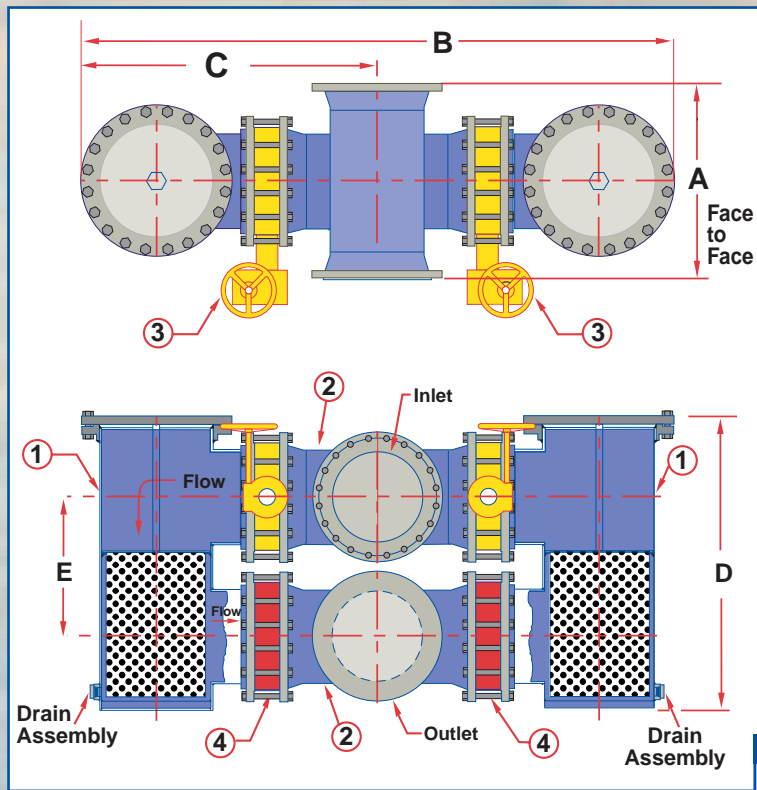
Dimensional Data

| Size | | A | B | C | D |
|--------|--------|---------|--------|----|--------|
| Inches | Prefix | | | | |
| 2 | 0200 | 36 5/8 | 15 | 8 | 10 7/8 |
| 2 1/2 | 0250 | 39 | 18 | 8 | 11 3/8 |
| 3 | 0300 | 41 3/4 | 20 1/4 | 9 | 11 5/8 |
| 4 | 0400 | 46 3/4 | 25 1/4 | 11 | 12 3/8 |
| 6 | 0600 | 59 7/8 | 34 1/4 | 15 | 13 1/2 |
| 8 | 0800 | 72 3/8 | 43 1/2 | 17 | 17 3/4 |
| 10 | 1000 | 82 7/8 | 53 | 20 | 18 7/8 |
| 12 | 1200 | 94 7/8 | 63 | 26 | 20 1/2 |
| 14 | 1400 | 106 | 71 | 29 | 23 1/2 |
| 16 | 1600 | 114 5/8 | 79 1/2 | 32 | 29 |
| 18 | 1800 | 125 7/8 | 88 | 34 | 30 |
| 20 | 2000 | 142 | 97 1/2 | 39 | 32 |
| 24 | 2400 | 162 1/2 | 114 | 45 | 36 |

*Larger sizes available. Consult factory.

Manufacturer reserves the right to modify dimensions, materials, or design. Contact factory for certification.

Fabricated Dual Basket Strainers



Type DB150 Short Face to Face Dual Basket Assembly

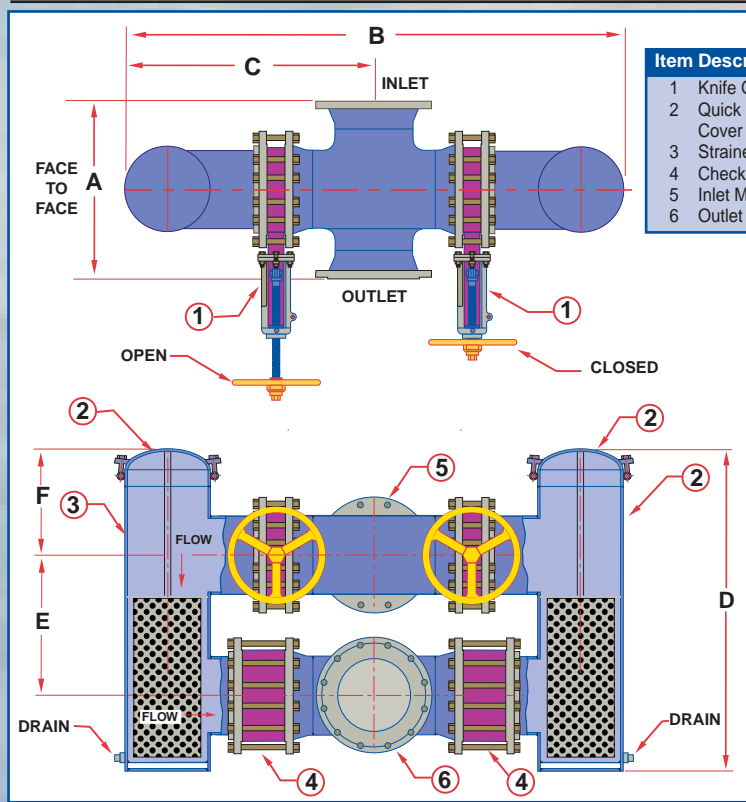
Dimensional Data

| Size | | A | B | C | D | E |
|--------|--------|--------|---------|----------|--------|----|
| Inches | Prefix | | | | | |
| 2 | 0200 | 10 1/4 | 35 3/8 | 17 11/16 | 21 | 10 |
| 2 1/2 | 0250 | 11 3/4 | 37 1/8 | 18 9/16 | 22 1/2 | 10 |
| 3 | 0300 | 12 1/2 | 38 1/4 | 19 1/8 | 23 | 10 |
| 4 | 0400 | 14 1/2 | 45 1/8 | 22 9/16 | 27 1/2 | 11 |
| 5 | 0500 | 17 | 52 7/8 | 26 7/17 | 30 | 12 |
| 6 | 0600 | 18 3/4 | 54 7/8 | 27 7/16 | 32 | 13 |
| 8 | 0800 | 22 1/4 | 64 3/8 | 32 3/16 | 37 | 15 |
| 10 | 1000 | 25 1/4 | 74 | 37 | 42 | 18 |
| 12 | 1200 | 29 1/4 | 83 1/2 | 41 3/4 | 47 1/2 | 21 |
| 14 | 1400 | 32 1/4 | 91 5/8 | 45 13/16 | 52 | 23 |
| 16 | 1600 | 34 1/4 | 97 7/8 | 48 15/16 | 54 | 25 |
| 18 | 1800 | 38 1/4 | 108 7/8 | 54 7/16 | 60 | 27 |
| 20 | 2000 | 41 1/2 | 123 5/8 | 61 13/16 | 65 | 29 |
| 24 | 2400 | 46 1/4 | 144 | 77 | 74 | 34 |

*Larger sizes available. Consult factory.

| Item | Description |
|------|-----------------------|
| 1 | Strainer Assembly |
| 2 | Inlet/outlet Manifold |
| 3 | Butterfly Valves |
| 4 | Check Valves |

Manufacturer reserves the right to modify dimensions, materials, or design. Contact factory for certification.



Type DB150 Knife Gate operated Dual Basket Assembly Class 150/125

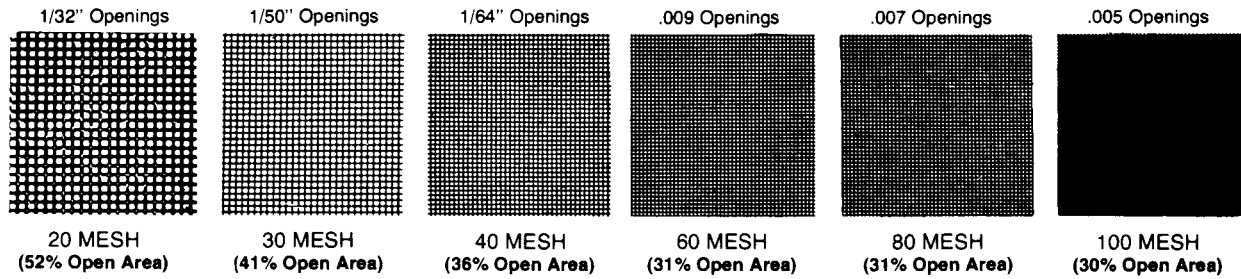
Dimensional Data

| Size | | A | B | C | D | E | F |
|--------|--------|--------|---------|---------|--------|----|--------|
| Inches | Prefix | | | | | | |
| 2 | 0200 | 10 1/4 | 33 1/2 | 16 3/4 | 23 5/8 | 10 | 6 5/8 |
| 2 1/2 | 0250 | 11 3/4 | 35 | 17 1/2 | 24 5/8 | 10 | 7 1/8 |
| 3 | 0300 | 12 1/2 | 37 1/8 | 18 9/16 | 24 7/8 | 10 | 7 3/8 |
| 4 | 0400 | 14 1/2 | 39 1/2 | 19 3/4 | 27 5/8 | 11 | 8 1/8 |
| 5 | 0500 | 17 | 47 | 23 1/2 | 30 | 12 | 9 1/8 |
| 6 | 0600 | 18 3/4 | 50 3/8 | 25 3/16 | 32 | 13 | 9 5/8 |
| 8 | 0800 | 22 1/4 | 61 | 30 1/2 | 37 3/8 | 15 | 11 3/8 |
| 10 | 1000 | 25 1/4 | 70 | 35 | 43 5/8 | 18 | 13 5/8 |
| 12 | 1200 | 29 1/4 | 79 1/4 | 39 5/8 | 50 | 21 | 15 5/8 |
| 14 | 1400 | 32 1/4 | 87 | 43 1/2 | 54 5/8 | 23 | 17 1/8 |
| 16 | 1600 | 34 1/4 | 94 | 47 | 60 5/8 | 25 | 19 1/8 |
| 18 | 1800 | 38 1/4 | 102 | 51 | 65 | 27 | 21 1/8 |
| 20 | 2000 | 41 1/2 | 117 3/4 | 58 7/8 | 71 | 29 | 23 7/8 |
| 24 | 2400 | 46 1/4 | 134 1/2 | 67 1/4 | 80 5/8 | 34 | 26 5/8 |

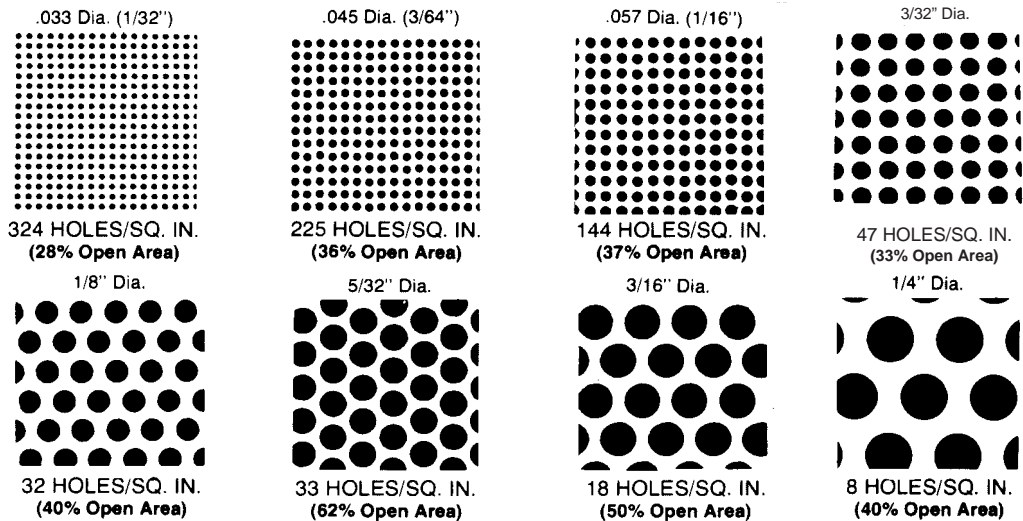
*Larger sizes available. Consult factory.

Perforated Metal and Mesh

AVAILABLE IN ALL MATERIALS



MESH SIZES OTHER THAN SHOWN—AVAILABLE ON APPLICATION



Mesh - Inch - Micron Conversion Chart

| Meshes/Lineal Inch US and ASTM Std. Sieve No. | Actual Opening | | Meshes/Lineal Inch US and ASTM Std. Sieve No. | Actual Opening | |
|---|----------------|---------|---|----------------|---------|
| | Inches | Microns | | Inches | Microns |
| 10 | .075 | 1905 | 130 | .0043 | 109 |
| 12 | .060 | 1524 | 140 | .0042 | 107 |
| 14 | .051 | 1295 | 150 | .0041 | 104 |
| 16 | .045 | 1143 | 160 | .0038 | 97 |
| 18 | .039 | 991 | 170 | .0035 | 89 |
| 20 | .034 | 864 | 180 | .0033 | 84 |
| 24 | .028 | 711 | 200 | .0029 | 74 |
| 30 | .020 | 508 | 250 | .0024 | 61 |
| 35 | .018 | 457 | 300 | .0018 | 46 |
| 40 | .015 | 381 | 400 | .0015 | 38 |
| 50 | .011 | 279 | 120 x 400 | .0016 | 40 |
| 60 | .009 | 229 | 80 x 700 | .0012 | 30 |
| 70 | .008 | 203 | 200 x 600 | .0010 | 25 |
| 80 | .007 | 178 | 165 x 1400 | .0007 | 17 |
| 100 | .006 | 152 | 200 x 1400 | .0004 | 10 |
| 120 | .0046 | 117 | 325 x 2300 | .0002 | 5 |

Sure Flow Equipment Inc. – Limited Warranty

All products are warranted to be free of defects in material and workmanship for a period of one year from the date of shipment, subject to below. **All custom products are not subject to return, credit or refund.**

If the purchaser believes a product to be defective, the purchaser shall:

- (a) Notify the manufacturer, state the alleged defect and request permission to return the product. Merchandise will not be accepted for return without a "Return Code" clearly marked on the outside of the package. Contact the office to obtain a return code.
- (b) If permission is given, return the product with the transportation **prepaid**. Collect shipments will not be accepted. Goods must be returned prepaid.

If the product is accepted for return and found to be defective, the manufacturer will, at its discretion, either repair or replace the product, f.o.b. factory, within 60 days of receipt, or issue credit for the purchase price.

Other than to repair, replace or credit as described above, purchaser agrees that manufacturer shall not be liable for any loss, costs, expenses or damages of any kind arising out of the product, its use, installation or replacement, labeling, instructions, information or technical data of any kind, description of product or use, sample or model, warnings or lack of any of the foregoing.

NO OTHER WARRANTIES, WRITTEN OR ORAL, EXPRESS OR IMPLIED, INCLUDING THE WARRANTIES OF FITNESS FOR A PARTICULAR PURPOSE AND MERCHANTABILITY, ARE MADE OR AUTHORIZED. NO AFFIRMATION OF ACT, PROMISE, DESCRIPTION OF PRODUCT OR USE OR SAMPLE OR MODEL SHALL CREATE ANY WARRANTY FROM MANUFACTURER, UNLESS SIGNED BY THE PRESIDENT OF MANUFACTURER.

Catalogs Available from Sure Flow Equipment





Industrial Valves and Strainers available from Sure Flow



Ball Valves



Knife Gate Valves



Dual Basket Strainers



Cone Strainers



Foot Valves



Custom Baskets



Check Valves



Butterfly Valves

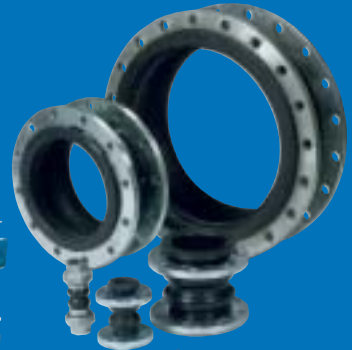
Basket Strainers



Basket Strainers



Duplex Strainers



Pump Connectors

U.S.A.: P.O. Box 321, Tonawanda, New York 14151-0321
 1-800-263-8251 • Toll Free Fax 1-800-876-1164
 Canada: 3179 Mainway Drive, Burlington, ON L7M 1A6
 Tel: 905-335-1350 • Fax: 905-332-4993
 Email: info@sureflowequipment.com
 Web Site: www.sureflowequipment.com

